

**PerCP/Cy5.5 anti-human CD52**

**Catalog # / Size:** 2180045 / 25 tests  
2180050 / 100 tests

**Clone:** HI186

**Isotype:** Mouse IgG2b,  $\kappa$

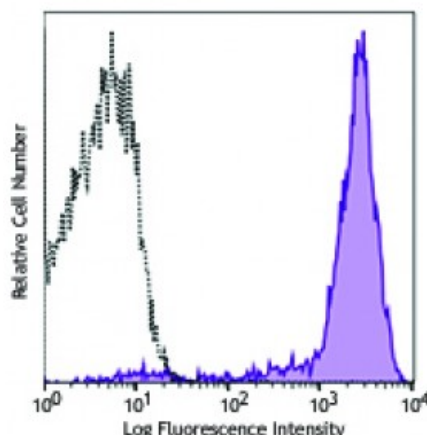
**Immunogen:** Human tonsil

**Reactivity:** Human

**Preparation:** The antibody was purified by affinity chromatography and conjugated with PerCP/Cy5.5 under optimal conditions. The solution is free of unconjugated PerCP/Cy5.5 and unconjugated antibody.

**Formulation:** Phosphate-buffered solution, pH 7.2, containing 0.09% sodium azide and 0.2% (w/v) BSA (origin USA).

**Concentration:** 0.2



Human peripheral blood lymphocytes stained with PerCP/Cy5.5 anti-human CD52 (clone HI186, filled histogram) or mouse IgG2b,  $\kappa$  PerCP/Cy5.5 isotype control (open histogram).

**Applications:**

**Applications:** Flow Cytometry

**Recommended Usage:** Each lot of this antibody is quality control tested by immunofluorescent staining with flow cytometric analysis. For flow cytometric staining, the suggested use of this reagent is 5 microL per million cells or 5 microL per 100 microL of whole blood. It is recommended that the reagent be titrated for optimal performance for each application.

\* PerCP/Cy5.5 has a maximum absorption of 482 nm and a maximum emission of 690 nm.

This product is subject to proprietary rights of Sirigen Inc. and is made and sold under license from Sirigen Inc. The purchase of this product conveys to the buyer a non-transferable right to use the purchased product for research purposes only. This product may not be resold or incorporated in any manner into another product for resale. Any use for therapeutics or diagnostics is strictly prohibited. This product is covered by U.S. Patent(s), pending patent applications and foreign equivalents.

**Application Notes:** Additional reported applications (for the relevant formats) include: immunohistochemical staining of formalin-fixed paraffin-embedded tissue sections.

**Application References:** 1. Kishimoto T, *et al.* Eds. 1997. Leucocyte Typing VI. Garland Publishing Inc. London.

**Description:** CD52, also known as Cambridge pathology antigen 1 (CAMPATH-1), is a 25-29 kD glycoprotein containing a large N-linked carbohydrate moiety. The actual molecule of CD52 is only 8-9 kD. It is expressed in the male reproductive tract and on virtually all lymphocytes (T and B cells), as well as macrophages/monocytes, eosinophils, and red cells. CD52 is thought to play a role in carrying and orienting carbohydrates. CD52 is a potent target for

complement-mediated lysis and antibody-mediated cellular cytotoxicity and has been used as a depletion target for chronic lymphocytic leukemia (CLL)/lymphoma and immunosuppression. The HI186 antibody is useful for flow cytometry and immunohistochemistry.

**Antigen**  
**References:**

1. Leukocyte Typing VI. Kishimoto T, *et al.* (Eds.) Garland Publishing Inc. (1997)
2. Xia MQ, *et al.* 1991. *Eur. J. Immunol.* 21:1677.
3. Kirchhoff C, *et al.* 1993. *Mol. Reprod. Dev.* 34:8.
4. Xia