

**FITC anti-human CD52**

**Catalog # / Size:** 2180020 / 100 tests  
2180015 / 25 tests

**Clone:** HI186

**Isotype:** Mouse IgG2b, κ

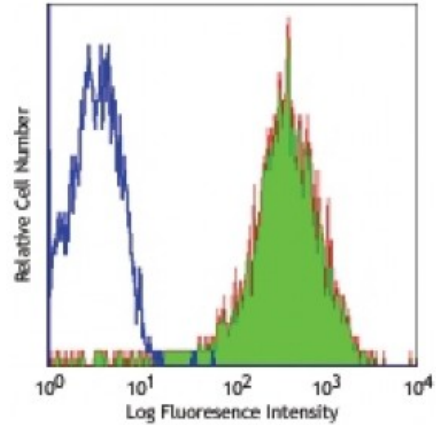
**Immunogen:** Human tonsil

**Reactivity:** Human

**Preparation:** The antibody was purified by affinity chromatography, and conjugated with FITC under optimal conditions. The solution is free of unconjugated FITC.

**Formulation:** Phosphate-buffered solution, pH 7.2, containing 0.09% sodium azide and 0.2% (w/v) BSA (origin USA).

**Concentration:** Lot-specific



Human peripheral blood lymphocytes stained with HI186 FITC

**Applications:**

**Applications:** Flow Cytometry

**Recommended Usage:** Each lot of this antibody is quality control tested by immunofluorescent staining with flow cytometric analysis. **Test size products are transitioning from 20 microL to 5 microL per test.** Please check your vial or your CoA to find the suggested use of this reagent per million cells in 100 microL staining volume or per 100 microL of whole blood. It is recommended that the reagent be titrated for optimal performance for each application.

**Application Notes:** Additional reported applications (for the relevant formats) include: immunohistochemical staining of formalin-fixed paraffin-embedded tissue sections.

**Application References:** 1. Kishimoto T, *et al.* Eds. 1997. Leucocyte Typing VI. Garland Publishing Inc. London.

**Description:** CD52, also known as Cambridge pathology antigen 1 (CAMPATH-1), is a 25-29 kD glycoprotein containing a large N-linked carbohydrate moiety. The actual molecule of CD52 is only 8-9 kD. It is expressed in the male reproductive tract and on virtually all lymphocytes (T and B cells), as well as macrophages/monocytes, eosinophils, and red cells. CD52 is thought to play a role in carrying and orienting carbohydrates. CD52 is a potent target for complement-mediated lysis and antibody-mediated cellular cytotoxicity and has been used as a depletion target for chronic lymphocytic leukemia (CLL)/lymphoma and immunosuppression. The HI186 antibody is useful for flow cytometry and immunohistochemistry.

**Antigen References:** 1. Leukocyte Typing VI. Kishimoto T, *et al.* (Eds.) Garland Publishing Inc. (1997)  
2. Xia MQ, *et al.* 1991. *Eur. J. Immunol.* 21:1677.  
3. Kirchhoff C, *et al.* 1993. *Mol. Reprod. Dev.* 34:8.  
4. Xia MQ, *et al.* <