

**APC anti-human CD177**

**Catalog # / Size:** 2179040 / 100 tests  
2179035 / 25 tests

**Clone:** MEM-166

**Isotype:** Mouse IgG1,  $\kappa$

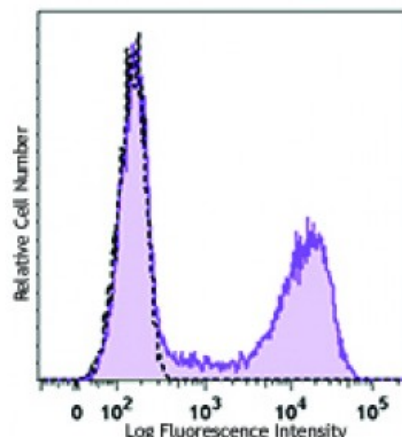
**Immunogen:** Human granulocytes

**Reactivity:** Human

**Preparation:** The antibody was purified by affinity chromatography and conjugated with APC under optimal conditions. The solution is free of unconjugated APC and unconjugated antibody.

**Formulation:** Phosphate-buffered solution, pH 7.2, containing 0.09% sodium azide and 0.2% (w/v) BSA (origin USA).

**Concentration:** 0.2



Human peripheral blood granulocytes were stained with CD177 (clone MEM-166) APC (filled histogram) or mouse IgG1,  $\kappa$  APC isotype control (open histogram).

**Applications:**

**Applications:** Flow Cytometry

**Recommended Usage:** Each lot of this antibody is quality control tested by immunofluorescent staining with flow cytometric analysis. For flow cytometric staining, the suggested use of this reagent is 5 microL per million cells or 5 microL per 100 microL of whole blood. It is recommended that the reagent be titrated for optimal performance for each application.

**Application Notes:** Additional reported applications (for the relevant formats) include: immunoprecipitation, Western blotting<sup>5</sup>, and immunofluorescence<sup>4</sup>.

**Application References:**

1. Leucocyte Typing VII. Mason D, *et al.* Eds, 2002 Oxford University Press.
2. von Vietinghoff S, *et al.* 2007. *Blood* 109:4487. [PubMed](#)
3. Korkmaz B, *et al.* 2008. *J. Biol. Chem.* 283:35976. [PubMed](#)
4. von Vietinghoff S, *et al.* 2007. *Blood* 109:4487. (IF)
5. Jankowska AM, *et al.* 2011. *Haematologica*. 96:954. (WB)

**Description:** CD177 is also known as neutrophil specific antigen 1, NB1, and polycythemia rubra vera 1. It is a member of the uPAR family and is a GPI-linked cell surface glycoprotein with a molecular weight of 60 kD. CD177 is expressed on granulocytes and bone marrow progenitors (early erythroblasts, megakaryocytes). It is thought to be involved in allogeneic and autoimmune responses to neutrophils.

**Antigen References:**

1. Leukocyte Typing VII. Mason D, *et al.* (Eds.) Oxford University Press (2002)
2. Kissel K, *et al.* 2001. *Eur. J. Immunol.* 31:1301.
3. Lalezari P, *et al.* 1971. *J. Clin. Invest.* 50:1108.
4. Teme