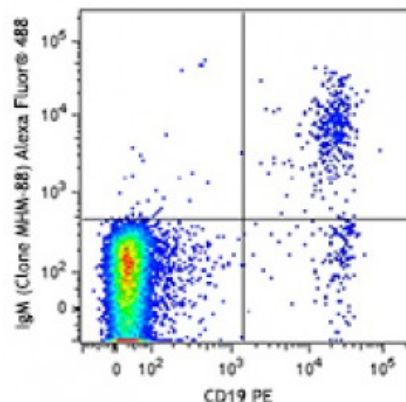


Alexa Fluor® 488 anti-human IgM

Catalog # / Size:	2172670 / 100 tests 2172665 / 25 tests
Clone:	MHM-88
Isotype:	Mouse IgG1, κ
Immunogen:	Human Ig cocktail
Reactivity:	Human
Preparation:	The antibody was purified by affinity chromatography and conjugated with Alexa Fluor® 488 under optimal conditions.
Formulation:	Phosphate-buffered solution, pH 7.2, containing 0.09% sodium azide and 0.2% (w/v) BSA (origin USA).
Concentration:	Lot-specific



Overnight cultured human peripheral blood mononuclear cells were stained with CD19 PE and anti-IgM (clone MHM-88) Alexa Fluor® 488 (top) or mouse IgG1, κ Alexa Fluor® 488 isotype control (bottom). Data shown is gated on lymphocyte population

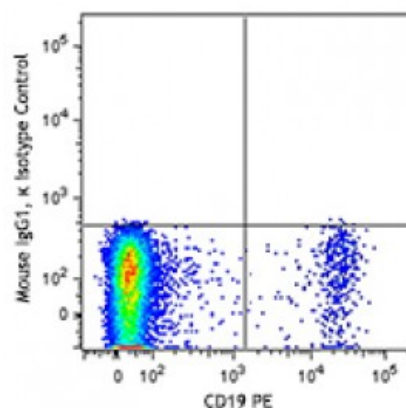
Applications:

Applications:	Flow Cytometry
Recommended Usage:	Each lot of this antibody is quality control tested by immunofluorescent staining with flow cytometric analysis. For flow cytometric staining, the suggested use of this reagent is 5 microL per million cells or 5 microL per 100 microL of whole blood. It is recommended that the reagent be titrated for optimal performance for each application.

* Alexa Fluor® 488 has a maximum emission of 519 nm when it is excited at 488 nm.

Application Notes:	MHM-88 antibody reacts with both soluble and membrane human immunoglobulin M (IgM). It does not react with other Ig isotypes. Additional reported applications (for the relevant formats) include: use as a primary or secondary reagent for ELISA analysis.
---------------------------	--

Due to the presence of excess soluble IgM in whole blood, which competes for antibody binding, staining for IgM on cells in whole blood is not recommended.



Application 1. Perez-Shiyama C, *et al.* 2014. *J Immunol.* 192:5192. [PubMed](#)
References:

Description: IgM is the first immunoglobulin made by B cells in the immune response. Surface IgM is expressed on immature and mature B cells, while IgM heavy (μ) chain is expressed intracellularly in pre-B cells.