

**PE anti-human IgM**

**Catalog # / Size:** 2172540 / 100 tests  
2172535 / 25 tests

**Clone:** MHM-88

**Isotype:** Mouse IgG1, κ

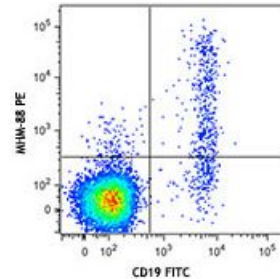
**Immunogen:** Human Ig cocktail

**Reactivity:** Human

**Preparation:** The antibody was purified by affinity chromatography, and conjugated with PE under optimal conditions. The solution is free of unconjugated PE and unconjugated antibody.

**Formulation:** Phosphate-buffered solution, pH 7.2, containing 0.09% sodium azide and 0.2% (w/v) BSA (origin USA).

**Concentration:** Lot-specific



Human peripheral blood lymphocytes were stained with CD19 FITC and anti-human IgM (clone MHM-88) PE (top) or mouse IgG1, κ PE isotype control (bottom).

**Applications:**

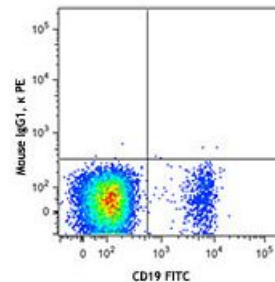
**Applications:** Flow Cytometry

**Recommended Usage:** Each lot of this antibody is quality control tested by immunofluorescent staining with flow cytometric analysis. **Test size products are transitioning from 20 microL to 5 microL per test.** Please check your vial or your CoA to find the suggested use of this reagent per million cells in 100 microL staining volume. It is recommended that the reagent be titrated for optimal performance for each application.

**Application Notes:** MHM-88 antibody reacts with both soluble and membrane human immunoglobulin M (IgM). It does not react with other Ig isotypes. Additional reported applications (for the relevant formats) include: use as a primary or secondary reagent for ELISA analysis.

Due to the presence of excess soluble IgM in whole blood, which competes for antibody binding, staining for IgM on cells in whole blood is not recommended.

**Application References:** 1. Perez-Shiyama C, et al. 2014. *J Immunol.* 192:5192. [PubMed](#)



**Description:** IgM is the first immunoglobulin made by B cells in the immune response. Surface IgM is expressed on immature and mature B cells, while IgM heavy ( $\mu$ ) chain is expressed intracellularly in pre-B cells.