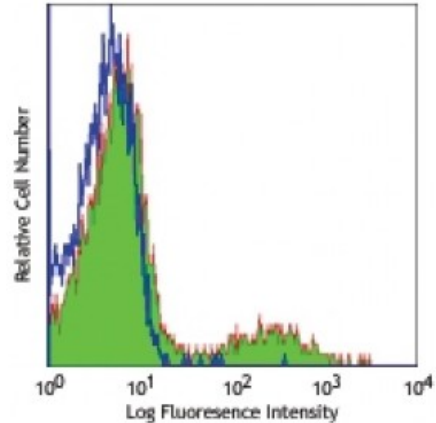


**Purified anti-human IgM**

**Catalog # / Size:** 2172510 / 100 µg  
**Clone:** MHM-88  
**Isotype:** Mouse IgG1, κ  
**Immunogen:** Human Ig cocktail  
**Reactivity:** Human  
**Preparation:** The antibody was purified by affinity chromatography.  
**Formulation:** Phosphate-buffered solution, pH 7.2, containing 0.09% sodium azide.  
**Concentration:** 0.5



Over night cultured human peripheral blood lymphocytes stained with purified MHM-88, followed by anti-mouse IgG FITC

**Applications:**

**Applications:** Other

**Recommended Usage:** Each lot of this antibody is quality control tested by immunofluorescent staining with flow cytometric analysis. For flow cytometric staining, the suggested use of this reagent is  $\leq 0.5$  microg per  $10^6$  in 100 microL staining volume. It is recommended that the reagent be titrated for optimal performance for each application.

**Application Notes:** MHM-88 antibody reacts with both soluble and membrane human immunoglobulin M (IgM). It does not react with other Ig isotypes. Additional reported applications (for the relevant formats) include: use as a primary or secondary reagent for ELISA analysis.

Due to the presence of excess soluble IgM in whole blood, which competes for antibody binding, staining for IgM on cells in whole blood is not recommended.

**Application References:**

1. Polek TC, *et al.* 2003. *J. Biol. Chem.* 278:32317.
2. Nakayama M, *et al.* 2003. *J. Immunol.* 170:341.
3. Karaca G, *et al.* 2014. *PLoS One.* 9:83987. (IHC, IF, WB) [PubMed](#)
4. Muñoz-García B, *et al.* 2006. *Stroke.* 37:2044. (IF, WB)
5. Jakubowski A, *et al.* 2005. *J. Clin. Invest.* 115:2955. (IHC)

**Description:** IgM is the first immunoglobulin made by B cells in the immune response. Surface IgM is expressed on immature and mature B cells, while IgM heavy ( $\mu$ ) chain is expressed intracellularly in pre-B cells.