

Biotin anti-human CD135 (Flt-3/Flk-2)

Catalog # / Size: 2166560 / 100 µg

Clone: BV10A4H2

Isotype: Mouse IgG1, κ

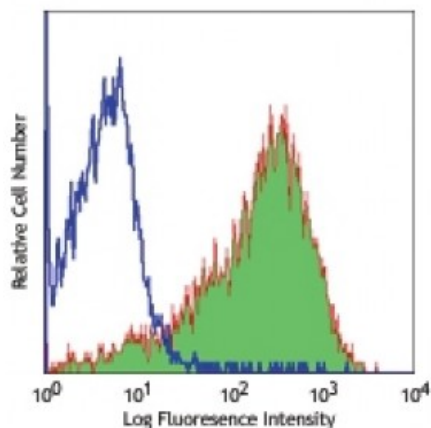
Immunogen: BV-173 pro-B cell line

Reactivity: Human

Preparation: The antibody was purified by affinity chromatography, and conjugated with biotin under optimal conditions. The solution is free of unconjugated biotin.

Formulation: Phosphate-buffered solution, pH 7.2, containing 0.09% sodium azide.

Concentration: 0.5



Human pre-B cell line REH stained with biotinylated BV10A4H2, followed by Sav-PE

Applications:

Applications: Flow Cytometry

Recommended Usage: Each lot of this antibody is quality control tested by immunofluorescent staining with flow cytometric analysis. For flow cytometric staining, the suggested use of this reagent is ≤2.0 microg per million cells in 100 microL volume. It is recommended that the reagent be titrated for optimal performance for each application.

Description: CD135 is a 130-160 kD type III tyrosine kinase receptor expressed on CD34⁺ hematopoietic stem cells, myelomonocytic progenitors, primitive B cell progenitors, and thymocytes. CD135 is also expressed on malignant hematopoietic cells including AML, ALL and CML-BC. CD135, also known as FMS-like tyrosine kinase-3, FLT3, STK-1, and Flk-2, is a growth factor receptor that binds the FLT3 ligand to promote the growth and differentiation of primitive hematopoietic cells. The intracytoplasmic domain of CD135 is modified by phosphorylation and has been shown to interact with Grb2, SOCS1, VAV1, and Shc.

Antigen References:

1. Rappold I, *et al.* 1997. *Blood* 90:111.
2. Rosnet O, *et al.* 1996. *Acta Haematol.* 95:218.
3. Rosnet O, *et al.* 1996. *Leukemia* 10:238.
4. Bertho JM, *et al.* 2000. *Scand. J.*