

**PE/Cy7 anti-human CD180 (RP105)**

**Catalog # /** 2164550 / 100 tests  
**Size:** 2164545 / 25 tests

**Clone:** MHR73-11

**Isotype:** Mouse IgG1,  $\kappa$

**Immunogen:** Human RP105 complexed with mouse MD-1

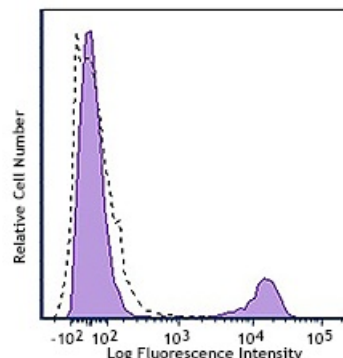
**Reactivity:** Human, Non-human primate, Other

**Preparation:** The antibody was purified by affinity chromatography and conjugated with PE/Cy7 under optimal conditions. The solution is free of unconjugated PE/Cy7 and unconjugated antibody.

**Formulation:** Phosphate-buffered solution, pH 7.2, containing 0.09% sodium azide and 0.2% (w/v) BSA (origin USA).

**Workshop Number:** IV M141

**Concentration:** Lot-specific



Human peripheral blood lymphocytes stained with CD180 (clone MHR73-11) PE/Cy7 (filled histogram) or Mouse IgG1

**Applications:**

**Applications:** Flow Cytometry

**Recommended Usage:** Each lot of this antibody is quality control tested by immunofluorescent staining with flow cytometric analysis. For flow cytometric staining, the suggested use of this reagent is 5  $\mu$ l per million cells in 100  $\mu$ l staining volume or 5  $\mu$ l per 100  $\mu$ l of whole blood. It is recommended that the reagent be titrated for optimal performance for each application.

**Application Notes:** Additional reported applications (for the relevant formats) include: intracellular staining<sup>1</sup>, immunoprecipitation<sup>1</sup>, immunohistochemistry<sup>1</sup> of acetone-fixed frozen tissue sections, B cell activation<sup>1</sup>, protection from apoptosis induced by radiation or dexamethasone, and induction of the costimulatory molecule CD80 (B7-1)<sup>1</sup>.

**Application References:** 1. Miura Y, *et al.* 1998. *Blood* 92:2815.

**Description:** CD180, also known as RP105, is a 105 kD member of the toll-like receptor (TLR) family and is expressed on most B cells, monocytes/macrophages and dendritic cells. The TLR family's structural characteristics are critically involved in protein-protein signaling interactions leading to the activation of the innate immune system. Additionally, MD-1, a secretory protein, associates with CD180 (RP105) at the cell surface and this complex, in conjunction with TLR4, recognizes bacterial LPS. The human CD180 (RP105) gene maps to 5q12. The MHR73-11 antibody is able to activate B cells and to protect against irradiation- or dexamethasone-induced apoptosis.

**Antigen References:** 1. Miura Y, *et al.* 1998. *Blood* 92:2815.