

**APC/Fire™ 750 anti-human CD10**

**Catalog # / Size:** 2161145 / 25 tests  
2161150 / 100 tests

**Clone:** HI10a

**Isotype:** Mouse IgG1, κ

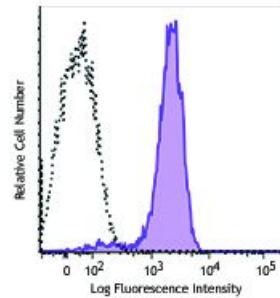
**Reactivity:** Human, Non-human primate, Other

**Preparation:** The antibody was purified by affinity chromatography and conjugated with APC/Fire™ 750 under optimal conditions.

**Formulation:** Phosphate-buffered solution, pH 7.2, containing 0.09% sodium azide and 0.2% (w/v) BSA (origin USA).

**Workshop Number:** V CD10.7

**Concentration:** Lot-specific



Human peripheral blood granulocytes were stained with anti-human CD10 (clone HI10a) APC/Fire™ 750 (filled histogram) or mouse IgG1, κ APC/Fire™ 750 isotype control (open histogram).

**Applications:**

**Applications:** Flow Cytometry

**Recommended Usage:** Each lot of this antibody is quality control tested by immunofluorescent staining with flow cytometric analysis. For flow cytometric staining, the suggested use of this reagent is 5 µl per million cells in 100 µl staining volume or 5 µl per 100 µl of whole blood.

\* APC/Fire™ 750 has a maximum excitation of 650 nm and a maximum emission of 787 nm.

**Description:** CD10 is a 100 kD neutral endopeptidase and a member of the metalloprotease family. It is a type II transmembrane protein also known as common acute lymphoblastic leukemia antigen (CALLA), enkephalinase, and neprilysin. CD10 is expressed on B cell precursors, T cell precursors, and neutrophils. CD10 is involved in B cell development and has been shown to bind opioid enkephalins, bradykinin, angiotensins I and II, and other biologically active peptides.

**Antigen References:** 1. Shipp M, *et al.* 1993. *Blood* 82:1052.  
2. Lu B, *et al.* 1995. *J. Exp. Med.* 181:2271.