

Brilliant Violet 421™ anti-human CD10

Catalog # / Size: 2161085 / 25 tests
2161090 / 100 tests

Clone: HI10a

Isotype: Mouse IgG1, κ

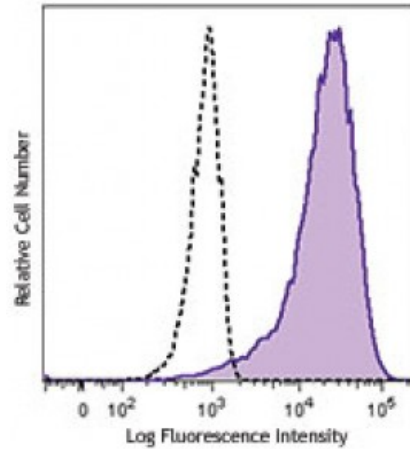
Reactivity: Human

Preparation: The antibody was purified by affinity chromatography and conjugated with Brilliant Violet 421™ under optimal conditions. The solution is free of unconjugated Brilliant Violet 421™ and unconjugated antibody.

Formulation: Phosphate-buffered solution, pH 7.2, containing 0.09% sodium azide and BSA (origin USA).

Workshop Number: V CD10.7

Concentration: Lot-specific



Human pre-B cell line REH was stained with CD10 (clone HI10a) Brilliant Violet 421™ (filled histogram) or mouse IgG1, κ Brilliant Violet 421™ isotype control (open histogram).

Applications:

Applications: Flow Cytometry

Recommended Usage: Each lot of this antibody is quality control tested by immunofluorescent staining with flow cytometric analysis. For flow cytometric staining, the suggested use of this reagent is ≤5 microL per million cells or 5 microL per 100 microL of whole blood. It is recommended that the reagent be titrated for optimal performance for each application.

Brilliant Violet 421™ excites at 405 nm and emits at 421 nm. The standard bandpass filter 450/50 nm is recommended for detection. Brilliant Violet 421™ is a trademark of Sirigen Group Ltd.

This product is subject to proprietary rights of Sirigen Inc. and is made and sold under license from Sirigen Inc. The purchase of this product conveys to the buyer a non-transferable right to use the purchased product for research purposes only. This product may not be resold or incorporated in any manner into another product for resale. Any use for therapeutics or diagnostics is strictly prohibited. This product is covered by U.S. Patent(s), pending patent applications and foreign equivalents.

Application Notes: Additional reported (for the relevant formats) applications include: immunohistochemistry⁶.

- Application References:**
1. Knapp W. 1989. Leucocyte Typing IV. Oxford University Press New York.
 2. Barclay N, *et al.* 1997. The Leucocyte Antigen Facts Book. Academic Press Inc. San Diego.
 3. Schlossman S, *et al.* Eds. 1995. Leucocyte Typing V. Oxford University Press. New York.
 4. Denny MF, *et al.* 2010. *J. Immunol.* 184:3284. [PubMed](#)
 5. Yoshino N, *et al.* 2000. *Exp. Anim. (Tokyo)* 49:97. (FC)
 6. Dall'Era MA, *et al.* 2007. *BMC Urol.* 7:3. (IHC)
 7. Reguena P, *et al.* 2014. *J Immunol.* 193:2971. [PubMed](#)
 8. Ratliff ML, *et al.* 2015. *J. Immunol.* 194:940. [PubMed](#)

Description: CD10 is a 100 kD neutral endopeptidase and a member of the metalloprotease family. It is a type II transmembrane protein also known as common acute lymphoblastic leukemia antigen (CALLA), enkephalinase, and neprilysin. CD10 is expressed on B cell precursors, T cell precursors, and neutrophils. CD10 is involved in B cell development and has been shown to bind opioid enkephalins, bradykinin, angiotensins I and II, and other biologically active peptides.

Antigen 1. Shipp M, *et al.* 1993. *Blood* 82:1052.
References: 2. Lu B, *et al.* 1995. *J. Exp. Med.* 181:2271.