

PerCP/Cyanine5.5 anti-human CD10

Catalog # / Size: 2161075 / 25 tests
2161080 / 100 tests

Clone: HI10a

Isotype: Mouse IgG1, κ

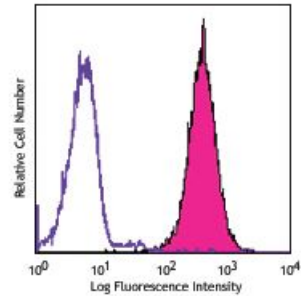
Reactivity: Human

Preparation: The antibody was purified by affinity chromatography and conjugated with PerCP/Cyanine5.5 under optimal conditions. The solution is free of unconjugated PerCP/Cyanine5.5 and unconjugated antibody.

Formulation: Phosphate-buffered solution, pH 7.2, containing 0.09% sodium azide and 0.2% (w/v) BSA (origin USA).

Workshop Number: V CD10.7

Concentration: Lot-specific



Human pre-B cell line, Nalm-6, stained with HI10a PerCP/Cy5.5

Applications:

Applications: Flow Cytometry

Recommended Usage: Each lot of this antibody is quality control tested by immunofluorescent staining with flow cytometric analysis. For flow cytometric staining, the suggested use of this reagent is 5 µl per million cells or 5 µl per 100 µl of whole blood. It is recommended that the reagent be titrated for optimal performance for each application.

* PerCP/Cyanine5.5 has a maximum absorption of 482 nm and a maximum emission of 690 nm.

Application Notes: Additional reported (for the relevant formats) applications include: immunohistochemistry⁶.

Application References: 1. Shipp M, *et al.* 1993. *Blood* 82:1052.
2. Lu B, *et al.* 1995. *J. Exp. Med.* 181:2271.

Description: CD10 is a 100 kD neutral endopeptidase and a member of the metalloprotease family. It is a type II transmembrane protein also known as common acute lymphoblastic leukemia antigen (CALLA), enkephalinase, and neprilysin. CD10 is expressed on B cell precursors, T cell precursors, and neutrophils. CD10 is involved in B cell development and has been shown to bind opioid enkephalins, bradykinin, angiotensins I and II, and other biologically active peptides.

Antigen References: 1. Shipp M, *et al.* 1993. *Blood* 82:1052.
2. Lu B, *et al.* 1995. *J. Exp. Med.* 181:2271.