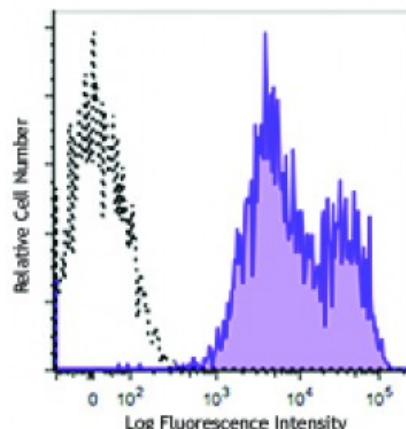


Alexa Fluor® 700 anti-human HLA-A,B,C

Catalog # / Size:	2157185 / 25 tests 2157190 / 100 tests
Clone:	W6/32
Isotype:	Mouse IgG2a, κ
Reactivity:	Human
Preparation:	The antibody was purified by affinity chromatography and conjugated with Alexa Fluor® 700 under optimal conditions.
Formulation:	Phosphate-buffered solution, pH 7.2, containing 0.09% sodium azide and 0.2% (w/v) BSA (origin USA).
Concentration:	Lot-specific



Human peripheral blood lymphocytes were stained with HLA-A,B,C (clone W6/32) Alexa Fluor® 700 (filled histogram) or mouse IgG2a, κ Alexa Fluor® 700 isotype control (open histogram).

Applications:

Applications:	Flow Cytometry
Recommended Usage:	Each lot of this antibody is quality control tested by immunofluorescent staining with flow cytometric analysis. For flow cytometric staining, the suggested use of this reagent is 5 microL per million cells or 5 microL per 100 microL of whole blood. It is recommended that the reagent be titrated for optimal performance for each application.

* Alexa Fluor® 700 has a maximum emission of 719 nm when it is excited at 633 nm / 635 nm. Prior to using Alexa Fluor® 700 conjugate for flow cytometric analysis, please verify your flow cytometer's capability of exciting and detecting the fluorochrome.

Application Notes:	Clone W6/32 recognizes a monomorphic epitope on the 45 kD polypeptide products of HLA-A, B, C ¹⁸ .
---------------------------	---

Additional reported applications (for the relevant formats) include: immunoprecipitation², Western blotting (non-reducing)³, immunohistochemical staining of acetone-fixed frozen tissue sections^{4,5}, blocking^{6,7}, inhibition of NK cell-mediated lysis¹⁰, and activation^{8,9}. Clone W6/32 has been reported not to be suitable for immunohistochemistry on paraffin sections¹⁷. The LEAF™ purified antibody (Endotoxin <0.1 EU/μg, Azide-Free, 0.2 μm filtered) is recommended for functional assays (Cat. No. 311412). For highly sensitive assays, we recommend Ultra-LEAF™ purified antibody (Cat. No. 311428) with a lower endotoxin limit than standard LEAF™ purified antibodies (Endotoxin <0.01 EU/microg).

Application References:	1. Darrow TL, <i>et al.</i> 1989. <i>J. Immunol.</i> 142:3329. 2. Stern P, <i>et al.</i> 1987. <i>J. Immunol.</i> 138:1088. 3. Tran TM, <i>et al.</i> 2001. <i>Immunogenetics</i> 53:440. 4. Barbatis C, <i>et al.</i> 1981. <i>Gut</i> 22:985. 5. Ayyoub M, <i>et al.</i> 2004. <i>Cancer Immunity</i> 4:7. 6. DeFelice M, <i>et al.</i> 1990. <i>Cell. Immunol.</i> 126:420.
--------------------------------	---

7. Fayen J, *et al.* 1998. *Int. Immunol.* 10:1347.
 8. Turco MC, *et al.* 1988. *J. Immunol.* 141:2275.
 9. Geppert TD, *et al.* 1989. *J. Immunol.* 142:3763.
 10. Wooden SL, *et al.* 2005. *J. Immunol.* 175:1383.
 11. Nagano M, *et al.* 2007. *Blood* 110:151.
 12. McLoughlin RM, *et al.* 2008. *J. Immunol.* 181:1323. [PubMed](#)
 13. Takahara M, *et al.* 2008. *J. Leukoc. Biol.* 83:742. [PubMed](#)
 14. Lunemann A, *et al.* 2008. *J. Immunol.* 181:6170. [PubMed](#)
 15. Laing BJ, *et al.* 2010. *J. Thorac Cardiovasc Surg.* 139:1402. [PubMed](#)
 16. Yoshino N, *et al.* 2000. *Exp. Anim. (Tokyo)* 49:97. (FC)
 17. Vambutas A, *et al.* 2000. *Clin. Diagn. Lab. Immun.* 7:79.
 18. Coppieters KT, *et al.* 2012. *J. Exp. Med.* 209:51. (epitope)
 19. Crivello P, *et al.* 2013. *Hum Immunol.* 22:100. [PubMed](#)
 20. Jung Y, *et al.* 2015. *Mol Cancer Res.* 13:197. [PubMed](#)
-

Description: MHC class I antigens associated with β 2-microglobulin are expressed by all human nucleated cells. MHC class I molecules are involved in presentation of antigens to CD8⁺ T cells. They play an important role in cell-mediated immune responses and tumor surveillance.

Antigen References: 1. Barclay AN, *et al.* Eds. 1993. The Leukocyte Antigen FactsBook. Academic Press Inc. San Diego.