

Pacific Blue™ anti-human HLA-A,B,C

Catalog # / Size: 2157085 / 25 µg
2157090 / 100 µg

Clone: W6/32

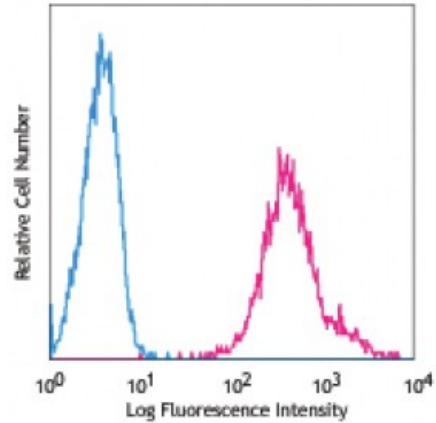
Isotype: Mouse IgG2a, κ

Reactivity: Human

Preparation: The antibody was purified by affinity chromatography, and conjugated with Pacific Blue™ under optimal conditions. The solution is free of unconjugated Pacific Blue™.

Formulation: Phosphate-buffered solution, pH 7.2, containing 0.09% sodium azide.

Concentration: 0.5



Human peripheral blood lymphocytes stained with W6/32 Pacific Blue™

Applications:

Applications: Flow Cytometry

Recommended Usage: Each lot of this antibody is quality control tested by immunofluorescent staining with flow cytometric analysis. For flow cytometric staining, the suggested use of this reagent is ≤ 1.0 microg per 10⁶ cells in 100 microL volume or 100 microL of whole blood. It is recommended that the reagent be titrated for optimal performance for each application.

* Pacific Blue™ has a maximum emission of 455 nm when it is excited at 405 nm. Prior to using Pacific Blue™ conjugate for flow cytometric analysis, please verify your flow cytometer's capability of exciting and detecting the fluorochrome.

Application Notes: Clone W6/32 recognizes a monomorphic epitope on the 45 kD polypeptide products of HLA-A, B, C¹⁸.

Additional reported applications (for the relevant formats) include: immunoprecipitation², Western blotting (non-reducing)³, immunohistochemical staining of acetone-fixed frozen tissue sections^{4,5}, blocking^{6,7}, inhibition of NK cell-mediated lysis¹⁰, and activation^{8,9}. Clone W6/32 has been reported not to be suitable for immunohistochemistry on paraffin sections¹⁷. The LEAF™ purified antibody (Endotoxin <0.1 EU/µg, Azide-Free, 0.2 µm filtered) is recommended for functional assays (Cat. No. 311412). For highly sensitive assays, we recommend Ultra-LEAF™ purified antibody (Cat. No. 311428) with a lower endotoxin limit than standard LEAF™ purified antibodies (Endotoxin <0.01 EU/microg).

- Application References:**
1. Darrow TL, *et al.* 1989. *J. Immunol.* 142:3329.
 2. Stern P, *et al.* 1987. *J. Immunol.* 138:1088.
 3. Tran TM, *et al.* 2001. *Immunogenetics* 53:440.
 4. Barbatis C, *et al.* 1981. *Gut* 22:985.
 5. Ayyoub M, *et al.* 2004. *Cancer Immunity* 4:7.
 6. DeFelice M, *et al.* 1990. *Cell. Immunol.* 126:420.
 7. Fayen J, *et al.* 1998. *Int. Immunol.* 10:1347.
 8. Turco MC, *et al.* 1988. *J. Immunol.* 141:2275.
 9. Geppert TD, *et al.* 1989. *J. Immunol.* 142:3763.
 10. Wooden SL, *et al.* 2005. *J. Immunol.* 175:1383.

11. Nagano M, *et al.* 2007. *Blood* 110:151.
 12. McLoughlin RM, *et al.* 2008. *J. Immunol.* 181:1323. [PubMed](#)
 13. Takahara M, *et al.* 2008. *J. Leukoc. Biol.* 83:742. [PubMed](#)
 14. Lunemann A, *et al.* 2008. *J. Immunol.* 181:6170. [PubMed](#)
 15. Laing BJ, *et al.* 2010. *J. Thorac Cardiovasc Surg.* 139:1402. [PubMed](#)
 16. Yoshino N, *et al.* 2000. *Exp. Anim. (Tokyo)* 49:97. (FC)
 17. Vambutas A, *et al.* 2000. *Clin. Diagn. Lab. Immun.* 7:79.
 18. Coppieters KT, *et al.* 2012. *J. Exp. Med.* 209:51. (epitope)
 19. Manuel SL, *et al.* 2013. *AIDS Res Hum Retrovirus.* 29:1273. [PubMed](#)
-

Description: MHC class I antigens associated with β 2-microglobulin are expressed by all human nucleated cells. MHC class I molecules are involved in presentation of antigens to CD8⁺ T cells. They play an important role in cell-mediated immune responses and tumor surveillance.

Antigen References: 1. Barclay AN, *et al.* Eds. 1993. The Leukocyte Antigen FactsBook. Academic Press Inc. San Diego.