

**PE anti-human CD24**

**Catalog # / Size:** 2155530 / 100 tests  
2155525 / 25 tests

**Clone:** ML5

**Isotype:** Mouse IgG2a, κ

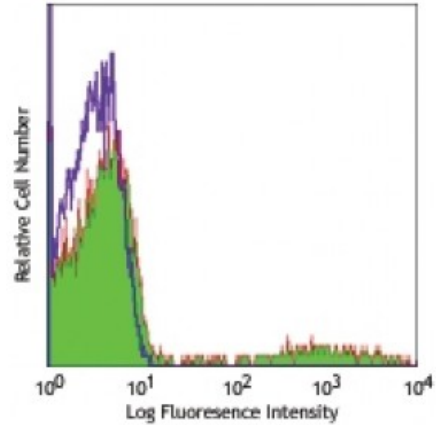
**Reactivity:** Human

**Preparation:** The antibody was purified by affinity chromatography, and conjugated with PE under optimal conditions. The solution is free of unconjugated PE and unconjugated antibody.

**Formulation:** Phosphate-buffered solution, pH 7.2, containing 0.09% sodium azide and 0.2% (w/v) BSA (origin USA).

**Workshop Number:** V CD24.5

**Concentration:** Lot-specific



Human peripheral blood lymphocytes stained ML5 PE

**Applications:**

**Applications:** Flow Cytometry

**Recommended Usage:** Each lot of this antibody is quality control tested by immunofluorescent staining with flow cytometric analysis. **Test size products are transitioning from 20 microL to 5 microL per test.** Please check your vial or your CoA to find the suggested use of this reagent per million cells in 100 microL staining volume or per 100 microL of whole blood. It is recommended that the reagent be titrated for optimal performance for each application.

**Application Notes:** Additional reported applications (for the relevant formats) include: immunofluorescence microscopy<sup>3</sup>.

- Application References:**
- Schlossman S, *et al.* Eds. 1995. Leukocyte Typing V:White Cell Differentiation Antigens. Oxford University Press. New York.
  - McMichael A, *et al.* 1987. Leukocyte Typing III. Oxford University Press. New York.
  - Yang GP, *et al.* 1999. *Nucleic Acids Research* 27:1517. (IF)
  - Kristiansen G, *et al.* 2003. *Clin. Cancer Res.* 9:4906. (FC)
  - Glinka Y, *et al.* 2012. *Biochem Biophys Res Commun.* 425:775. [PubMed](#)

**Description:** CD24 is a 35-45 kD glycosylphosphatidylinositol (GPI)-linked protein also known as heat stable antigen (HSA), BA-1, Ly-52, and nectadrin. It is expressed on the surface of B cells (but not plasma cells), granulocytes, follicular dendritic cells, and epithelial cells. CD24 may play a role in the regulation of B-cell proliferation and maturation. CD24 crosslinking induces a Ca<sup>2+</sup> flux in mature B cells. CD24 has been shown to interact with CD62P (P-selectin).

**Antigen References:**

- Schlossman S, *et al.* Eds. 1995. Leukocyte Typing V. Oxford University Press. New York.