

Alexa Fluor® 700 anti-human CD154

Catalog # / 2154230 / 100 tests

Size: 2154225 / 25 tests

Clone: 24-31

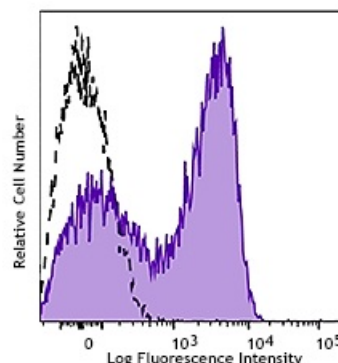
Isotype: Mouse IgG1, κ

Reactivity: Human, Non-human primate, Other

Preparation: The antibody was purified by affinity chromatography and conjugated with Alexa Fluor® 700 under optimal conditions. The solution is free of unconjugated Alexa Fluor® 700.

Formulation: Phosphate-buffered solution, pH 7.2, containing 0.09% sodium azide and 0.2% (w/v) BSA (origin USA).

Concentration: Lot-specific



PMA+ionomycin-stimulated (6 hours) human peripheral blood lymphocytes were stained with CD154 (clone 24-31) Alexa Fluor® 700 (filled histogram) or Mouse IgG1, κ Alexa Fluor® 700 isotype control (open histogram).

Applications:

Applications: Flow Cytometry

Recommended Usage: Each lot of this antibody is quality control tested by immunofluorescent staining with flow cytometric analysis. For flow cytometric staining, the suggested use of this reagent is 5 μ l per million cells or 5 μ l per 100 μ l of whole blood. It is recommended that the reagent be titrated for optimal performance for each application.

* Alexa Fluor® 700 has a maximum emission of 719 nm when it is excited at 633 nm / 635 nm. Prior to using Alexa Fluor® 700 conjugate for flow cytometric analysis, please verify your flow cytometer's capability of exciting and detecting the fluorochrome.

Application Notes: Additional reported applications (for the relevant formats) include: immunofluorescence microscopy^{1,3} and blocking of T cell-dependent B cell differentiation^{1,2,4,5}.

Application References:

1. Najafian N, et al. 2003. *Expert Opin. Biol. Ther.* 3:227.
2. Racke M, et al. 2002. *Expert Opin. Ther. Targets.* 6:275.
3. Ford G, et al. 1999. *J. Immunol.* 162:4037.

Description: CD154 (CD40 ligand) is also known as CD40L, gp39, TRAP and T-BAM. CD40 ligand is a 32-39 kD type II transmembrane glycoprotein. It is a member of the TNF superfamily and is expressed on activated T cells. It has been reported to be important for B cell costimulation following binding of its receptor, CD40. Additionally, binding of CD40L to CD40 on B cells promotes the secretion of immunoglobulin and Ig isotype switching. CD40L is also involved in the regulation of cytokine production by T cells.

Antigen References:

1. Najafian N, et al. 2003. *Expert Opin. Biol. Ther.* 3:227.
2. Racke M, et al. 2002. *Expert Opin. Ther. Targets.* 6:275.
3. Ford G, et al. 1999. *J. Immunol.* 162:4037.

