

APC anti-human CD282 (TLR2)

Catalog # / 2148600 / 100 tests
Size: 2148595 / 25 tests

Clone: TL2.1

Isotype: Mouse IgG2a, κ

Immunogen: Human TLR2-transfected CHO cells

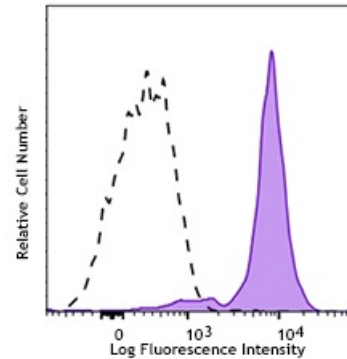
Reactivity: Human

Preparation: The antibody was purified by affinity chromatography and conjugated with APC under optimal conditions.

Formulation: Phosphate-buffered solution, pH 7.2, containing 0.09% sodium azide and 0.2% (w/v) BSA (origin USA)

Workshop Number: HCDM listed

Concentration: lot-specific



Human peripheral blood monocytes were stained with CD282 (TLR2) (clone TL2.1) APC (filled histogram) or mouse IgG2a, κ APC (open histogram) isotype control.

Applications:

Applications: Flow Cytometry

Recommended Usage: Each lot of this antibody is quality control tested by immunofluorescent staining with flow cytometric analysis. For flow cytometric staining, the suggested use of this reagent is 5 µL per million cells in 100 µL staining volume or 5 µL per 100 µL of whole blood. It is recommended that the reagent be titrated for optimal performance for each application.

Application Notes: The TL2.1 antibody is useful for blocking studies. It has been reported to block TLR2 agonist-induced cellular activation. Additional reported applications (for the relevant formats) include: inhibition of PGP activity and blocking of cytokine production^{1,3,7}, immunoprecipitation¹, immunohistochemistry of 4% paraformaldehyde-fixed frozen sections² and immunohistochemistry of HOPE-fixed (HEPES-glutamic acid buffer-mediated organic solvent protection effect) paraffin-embedded sections⁴, and Western blotting².

- Application References:**
1. Flo T, et al. 2000. *J. Immunol.* 164:2064.
 2. Faure E, et al. 2001. *J. Immunol.* 166:2018.
 3. Sugawara S, et al. 2001. *Infect. Immun.* 69:4951.
 4. Droemann D, et al. 2003. *Histochem. Cell Biol.* 119:103.
 5. Chavakis E, et al. 2007. *Circ. Res.* 100:204. [PubMed](#)
 6. Fiala M, et al. 2007. *Proc. Natl. Acad. Sci. USA* 10.1073/P. Natl. Acad. Sci. USA.0701267104.
 7. Goo SY, et al. 2007. *J. Biol. Chem.* doi:10.1074/jbc.M701876200. [PubMed](#)
 8. Weiss DJ, et al. 2008. *J. Leukoc. Biol.* 83:48. [PubMed](#)
 9. Harris, KM., et al. 2011. *J. Leukoc Biol.* 90:727. [PubMed](#).
 10. Ellass-Rocahrd E, et al. 2012. *J Biol Chem.* 287:34432. [PubMed](#).

Description: Toll-like receptors are type I transmembrane signaling receptors which are critical for the innate host defense to pathogens. Toll-like receptor 2 (TLR2), known as CD282, has been identified as a receptor that is central to the innate immune system's response to lipoproteins of Gram-negative bacteria and Gram-positive bacteria, as well as a receptor for peptidoglycan and lipoteichoic acid and other bacterial cell membrane products.

Antigen
References:

1. Lien E, *et al.* 1999. *J. Biol. Chem.* 274:33419.
2. Lien E, *et al.* 2001. *J. Biol. Chem.* 276:1873.
3. Sabroe I, *et al.* 2002. *J. Immunol.* 168:4701