

PE/Cy7 anti-human CD275 (B7-H2, ICOSL)

Catalog # / Size: 2147050 / 100 tests
2147045 / 25 tests

Clone: 2D3

Isotype: Mouse IgG2b, κ

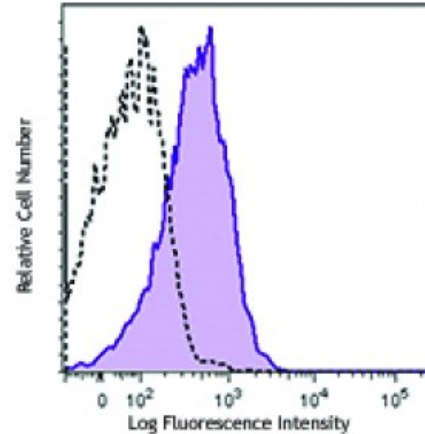
Immunogen: Human B7H2-mlg fusion protein

Reactivity: Human

Preparation: The antibody was purified by affinity chromatography and conjugated with PE/Cy7 under optimal conditions. The solution is free of unconjugated PE/Cy7 and unconjugated antibody.

Formulation: Phosphate-buffered solution, pH 7.2, containing 0.09% sodium azide and 0.2% (w/v) BSA (origin USA).

Concentration: Lot-specific



Human Burkitt's lymphoma cell line, Daudi was stained with CD275 (clone 2D3) PE/Cy7 (filled histogram), or mouse IgG2b, κ isotype PE/Cy7 (open histogram).

Applications:

Applications: Flow Cytometry

Recommended Usage: Each lot of this antibody is quality control tested by immunofluorescent staining with flow cytometric analysis. For flow cytometric staining, the suggested use of this reagent is 5 microL per million cells or 5 microL per 100 microL of whole blood. It is recommended that the reagent be titrated for optimal performance for each application.

Application References: 1. Kurosawa S, *et al.* 2003. *Am. J. Respir. Cell Mol. Biol.* 28:563.

Description: B7-H2, a member of the B7 family and the immunoglobulin superfamily, is a 40 kD protein also known as B7RP-1, B7h, B7-H2, GL50 and ICOS Ligand. Human B7-H2 is expressed by activated monocytes/macrophages and dendritic cells. B7-H2 binds to a CD28-like receptor, inducible costimulator molecule (ICOS, AILIM, CRP-1), which is expressed by activated T cells. The interaction of ICOS with B7-H2 plays an important role in the T cell costimulation pathway.

Antigen References: 1. Wang S, *et al.* 2002. *J. Biol. Chem.* 96:2808.
2. Wong SC, *et al.* 2003. *Blood* 102:1831.