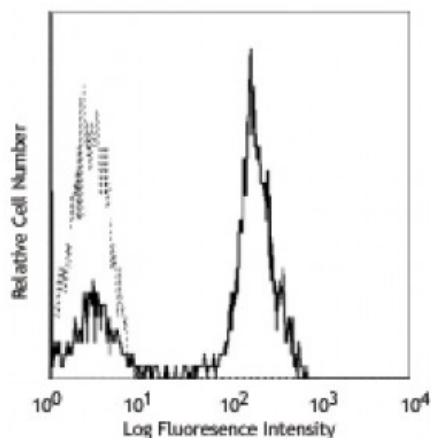


**Purified anti-human CD2**

**Catalog # / Size:** 2146010 / 100 µg  
**Clone:** TS1/8  
**Isotype:** Mouse IgG1, κ  
**Reactivity:** Human  
**Preparation:** The antibody was purified by affinity chromatography.  
**Formulation:** Phosphate-buffered solution, pH 7.2, containing 0.09% sodium azide.  
**Workshop Number:** V S025  
**Concentration:** 0.5



Human peripheral blood lymphocytes stained with purified TS1/8 and detected with anti-mouse IgGs FITC

**Applications:**

**Applications:** Flow Cytometry

**Recommended Usage:** Each lot of this antibody is quality control tested by immunofluorescent staining with flow cytometric analysis. For flow cytometric staining, the suggested use of this reagent is ≤0.25 microg per million cells in 100 microL volume. It is recommended that the reagent be titrated for optimal performance for each application.

**Application Notes:** Additional reported applications (for the relevant formats) include: blocking of T cell activation, and partial blocking of B cell costimulation<sup>2</sup>. The LEAF™ purified antibody (Endotoxin <0.1 EU/µg, Azide-Free, 0.2 µm filtered) is recommended for functional assays (Cat. No. 309212).

**Application References:** 1. Schlossman S, et al. Eds.1995. Leucocyte Typing V Oxford University Press. New York.  
 2. Hughes CCW, et al. 1996. *J. Biol. Chem.* 271:5369.

**Description:** CD2 is a 50 kD type I transmembrane glycoprotein also known as LFA-2, T11, and sheep red blood cell receptor (SRBC-R). This immunoglobulin superfamily member is expressed on thymocytes, T lymphocytes, NK cells, and thymic B cell subsets. The major ligand for CD2 is CD58 (also known as LFA-3). CD2 has also been reported to bind CD48, CD59, and CD15. CD2 plays a critical role in alternative T cell activation, T cell signaling, and cell-cell adhesion.

**Antigen References:** 1. Bell G, et al. 1995. *J. Immunol.* 155:2805.  
 2. Bierer B, et al. 1989. *Annu. Rev. Immunol.* 7:579.  
 3. Moingeon P, et al. 1989. *Immunol. Rev.* 111:111.