

Brilliant Violet 785™ anti-human HLA-DR

Catalog # / Size: 2138205 / 25 tests
2138210 / 100 tests

Clone: L243

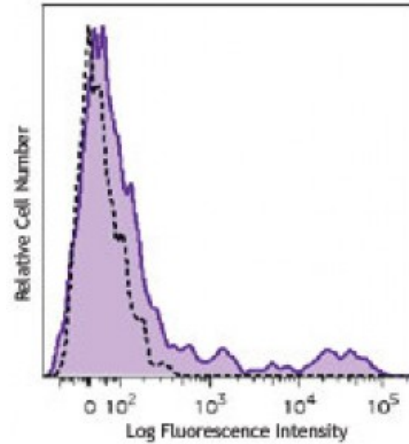
Isotype: Mouse IgG2a, κ

Reactivity: Human

Preparation: The antibody was purified by affinity chromatography and conjugated with Brilliant Violet 785™ under optimal conditions. The solution is free of unconjugated Brilliant Violet 785™ and unconjugated antibody.

Formulation: Phosphate-buffered solution, pH 7.2, containing 0.09% sodium azide and BSA (origin USA).

Concentration: Lot-specific



Human peripheral blood lymphocytes were stained with HLA-DR (clone L243) Brilliant Violet 785™.

Applications:

Applications: Flow Cytometry

Recommended Usage: Each lot of this antibody is quality control tested by immunofluorescent staining with flow cytometric analysis. For flow cytometric staining, the suggested use of this reagent is ≤5 microL per million cells or 5 microL per 100 microL of whole blood. It is recommended that the reagent be titrated for optimal performance for each application.

Brilliant Violet 785™ excites at 405 nm and emits at 785 nm. The bandpass filter 780/60 nm is recommended for detection, although filter optimization may be required depending on other fluorophores used. **Be sure to verify that your cytometer configuration and software setup are appropriate for detecting this channel.** Refer to your instrument manual or manufacturer for support. Brilliant Violet 785™ is a trademark of Sirigen Group Ltd.

This product is subject to proprietary rights of Sirigen Inc. and is made and sold under license from Sirigen Inc. The purchase of this product conveys to the buyer a non-transferable right to use the purchased product for research purposes only. This product may not be resold or incorporated in any manner into another product for resale. Any use for therapeutics or diagnostics is strictly prohibited. This product is covered by U.S. Patent(s), pending patent applications and foreign equivalents.

Application Notes: The L243 monoclonal antibody reacts with the HLA-DR antigen, a member of MHC class II molecules. It does not cross react with HLA-DP and HLA-DQ. Clone L243 binds a conformational epitope on HLA-DRα which depends on the correct folding of the αβ heterodimer.¹⁹

Additional reported applications (for the relevant formats) include: immunoprecipitation⁸, Western blotting⁸, *in vitro* blocking of mixed lymphocyte reactions^{9,10}, depletion of MHC class II cells⁷, and immunohistochemical staining of acetone-fixed frozen sections^{4,5}. The LEAF™ purified antibody (Endotoxin <0.1 EU/μg, Azide-Free, 0.2 μm filtered) is recommended for functional assays (Cat. No. 307612). For highly sensitive assays, we recommend Ultra-LEAF™ purified antibody (Cat. No. 307648) with a lower endotoxin limit than standard LEAF™

purified antibodies (Endotoxin <0.01 EU/microg).

- Application**
- References:**
1. Brodsky F. 1984. *Immunogenetics* 19:179.
 2. Robbins P, et al. 1987. *Human Immunol.* 18:301.
 3. Stites D, et al. 1986. *Clin. Immunol. Immunopathol.* 38:161.
 4. Warnke R, et al. 1980. *J. Histochem. Cytochem.* 28:771. (IHC)
 5. Engleman E, et al. 1981. *P. Natl. Acad. Sci. USA* 78:1791. (IHC)
 6. Zipf T, et al. 1981. *Cancer Res.* 41:4786.
 7. Goodier M, et al. 2000. *J. Immunol.* 165:139. (Depletion)
 8. Esser M, et al. 2001. *J. Virol.* 75:6173. (IP, WB)
 9. Kalka-Moll WM, et al. 2002. *J. Immunol.* 169:6149. (Block)
 10. Wang RF, et al. 1999. *Science* 284:1351. (Block)
 11. Zaba LC, et al. 2007. *J. Exp. Med.* 204:3183. [PubMed](#)
 12. Fujita H, et al. 2009. *P. Natl. Acad. Sci. USA* 106:21795. [PubMed](#)
 13. Charles N, et al. 2010. *Nat. Med.* 16:701. (FC) [PubMed](#)
 14. Goncalves RM, et al. 2010. *Infect. Immun.* 78:4763. [PubMed](#)
 15. Yoshino N, et al. 2000. *Exp. Anim. (Tokyo)* 49:97. (FC)
 16. Kim WK, et al. 2006. *Am. J. Pathol.* 168:822. (FC)
 17. Stein R, et al. 2011. *Leuk. Lymphoma* 52:273.
 18. Galkowska H, et al. 1996. *Vet. Immunol. Immunopathol.* 53:329.
 19. Moro M, et al. 2005. *BMC Immunol.* 6:24.
 20. Lauterbach N, et al. 2014. *Mol Immunol.* 59:19. [PubMed](#)
-

Description: HLA-DR is a heterodimeric cell surface glycoprotein comprised of a 36 kD α (heavy) chain and a 27 kD β (light) chain. It is expressed on B cells, activated T cells, monocytes/macrophages, dendritic cells, and other non-professional APCs. In conjunction with the CD3/TCR complex and CD4 molecules, HLA-DR is critical for efficient peptide presentation to CD4⁺ T cells.

- Antigen**
- References:**
1. Levacher M, et al. 1990. *Clin. Exp. Immunol.* 81:177.
 2. Terstappen L, et al. 1990. *J. Leukocyte Biol.* 48:138.
 3. Edwards JA, et al. 1986. *J. Immunol.* 137:490.
 4. van Es A, e