

PE anti-human CD161

Catalog # / 2137515 / 25 tests
Size: 2137520 / 100 tests

Clone: W18070C

Isotype: Rat IgG2a, κ

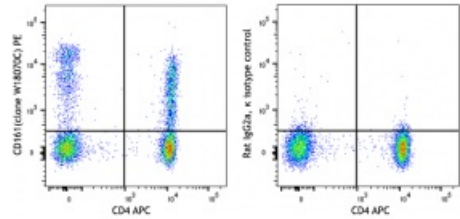
Immunogen: Human CD161 transfected cell line

Reactivity: Human

Preparation: The antibody was purified by affinity chromatography and conjugated with PE under optimal conditions.

Formulation: Phosphate-buffered solution, pH 7.2, containing 0.09% sodium azide and 0.2% (w/v) BSA (origin USA)

Concentration: Lot-specific



Human peripheral blood lymphocytes stained with CD4 APC and CD161 (clone W18070C) PE (left) or rat IgG2a, κ PE isotype control (right).

Applications:

Applications: Flow Cytometry

Recommended Usage: Each lot of this antibody is quality control tested by immunofluorescent staining with flow cytometric analysis. For flow cytometric staining, the suggested use of this reagent is 5 µL per million cells in 100 µL staining volume or 5 µL per 100 µL of whole blood. It is recommended that the reagent be titrated for optimal performance for each application.

Description: CD161 is a type II transmembrane glycoprotein, also known as NKR-P1A, that is expressed as a 40-44 kD homodimer. It is a member of the C-type lectin superfamily. CD161 is expressed on a majority of NK cells, NKT cells, and subsets of peripheral T cells and CD3⁺ thymocytes. It has been reported that Th17 cells are a subpopulation of CD4⁺CD161⁺CCR6⁺ cells. While the biological function of CD161 is not clear, it has been suggested to serve either as a stimulatory receptor or to inhibit NK cell-mediated cytotoxicity and cytokine production. LLT-1 (lectin-like transcript-1, also named as osteoclast inhibitory lectin or CLEC2D) is the ligand of CD161.

- Antigen**
References:
1. Takahashi T, *et al.* 2006. *J. Immunol.* 176:211.
 2. Cosmi L, *et al.* 2008. *J. Exp. Med.* 205:1903.
 3. Aldemir H, *et al.* 2005. *J. Immunol.* 175:7791.
 4. Rosen DB, *et al.* 2008. *J. Immunol.* 180:6508.