

Brilliant Violet 750™ anti-human TCR α/β

Catalog # / 2133730 / 100 tests
Size: 2133725 / 25 tests

Clone: IP26

Isotype: Mouse IgG1, κ

Immunogen: CP-MAC-infected Sup-T1 cells

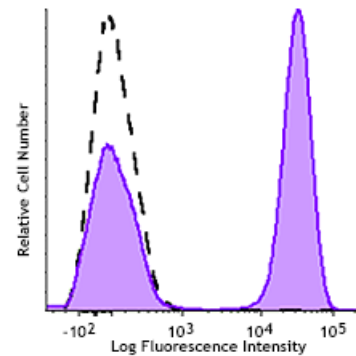
Reactivity: Human

Preparation: The antibody was purified by affinity chromatography and conjugated with Brilliant Violet 750™ under optimal conditions. The solution is free of unconjugated Brilliant Violet 750™ and unconjugated antibody.

Formulation: Phosphate-buffered solution, pH 7.2, containing 0.09% sodium azide and BSA (origin USA).

Workshop Number: VII 70204

Concentration: Lot-specific



Human peripheral blood lymphocytes were stained with TCRα/β (clone IP26) Brilliant Violet 750™ (filled histogram) or Mouse IgG1, κ Brilliant Violet 750™ isotype control (open histogram).

Applications:

Applications: Flow Cytometry

Recommended Usage: Each lot of this antibody is quality control tested by immunofluorescent staining with flow cytometric analysis. For flow cytometric staining, the suggested use of this reagent is 5 µl per million cells in 100 µl staining volume or 5 µl per 100 µl of whole blood.

Brilliant Violet 750™ excites at 405 nm and emits at 750 nm. The bandpass filter 780/60 nm is recommended for detection, although filter optimization may be required depending on other fluorophores used. Be sure to verify that your cytometer configuration and software setup are appropriate for detecting this channel. Refer to your instrument manual or manufacturer for support. Brilliant Violet 750™ is a trademark of Sirigen Group Ltd.

This product is subject to proprietary rights of Sirigen Inc. and is made and sold under license from Sirigen Inc. The purchase of this product conveys to the buyer a non-transferable right to use the purchased product for research purposes only. This product may not be resold or incorporated in any manner into another product for resale. Any use for therapeutics or diagnostics is strictly prohibited. This product is covered by U.S. Patent(s), pending patent applications and foreign equivalents.

Application Notes: Additional reported applications (for the relevant formats) include: T cell activation. When co-staining with anti-CD3, we recommend using clone UCHT1, since we have confirmed that IP26 does not compete with this clone. Other anti-CD3 clones may compete out the binding of IP26.

Application References:

- Schlossman S, *et al.* Eds. 1995. Leucocyte Typing V. Oxford University Press. New York. (FC)
- Joseph A, *et al.* 2008. *J. Virol.* 82:3078. (FC) [PubMed](#)
- Pinto JP, *et al.* 2010. *Immunology.* 130:217. [PubMed](#)

Description: The IP26 antibody reacts with a monomorphic determinant of the α/β T-cell receptor, which is expressed on greater than 95% of normal peripheral blood CD3⁺ T cells. The α/β TCR recognizes a peptide bound to MHC leading to T-cell activation.

Antigen
References: 1. Marchalonis J, et al. 2002. *J. Mol. Recognit.* 15:260.