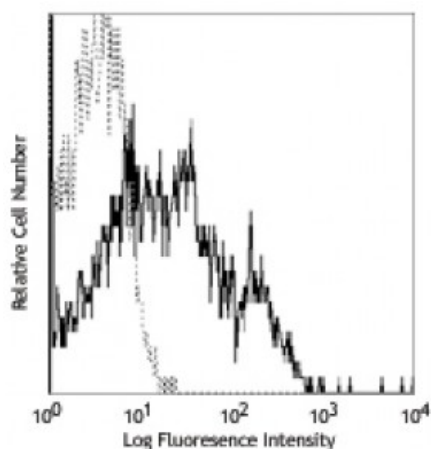


## PE anti-human CD150 (SLAM)

<b>Catalog # / Size:</b>	2131535 / 25 tests 2131540 / 100 tests
<b>Clone:</b>	A12 (7D4)
<b>Isotype:</b>	Mouse IgG1, $\kappa$
<b>Immunogen:</b>	Activated human PBMC
<b>Reactivity:</b>	Human
<b>Preparation:</b>	The antibody was purified by affinity chromatography, and conjugated with PE under optimal conditions. The solution is free of unconjugated PE and unconjugated antibody.
<b>Formulation:</b>	Phosphate-buffered solution, pH 7.2, containing 0.09% sodium azide and 0.2% (w/v) BSA (origin USA).
<b>Concentration:</b>	Lot-specific



Human peripheral blood lymphocytes stained with A12 PE

## Applications:

**Applications:** Flow Cytometry

**Recommended Usage:** Each lot of this antibody is quality control tested by immunofluorescent staining with flow cytometric analysis. **Test size products are transitioning from 20 microL to 5 microL per test.** Please check your vial or your CoA to find the suggested use of this reagent per million cells in 100 microL staining volume or per 100 microL of whole blood. It is recommended that the reagent be titrated for optimal performance for each application.

**Application Notes:** Additional reported applications (for the relevant formats) include: immunohistochemical staining of acetone-fixed frozen tissue sections, immunoprecipitation<sup>4</sup>, and costimulation<sup>1,5</sup> of IFN-gamma production and T cell proliferation. The LEAF<sup>™</sup> purified antibody (Endotoxin <0.1 EU/ $\mu$ g, Azide-Free, 0.2  $\mu$ m filtered) is recommended for functional assays (Cat. No. 306310).

- Application References:**
1. Garcia V, *et al.* 2001. *J. Immunol.* 167:5719. (Costim)
  2. Vincent S, *et al.* 2002. *J. Virol.* 76:6121.
  3. Cocks B, *et al.* 1995. *Nature* 376:260.
  4. Sayos J, *et al.* 2001. *Blood* 97:3867. (IP)
  5. Aversa G, *et al.* 1997. *J. Immunol.* 158:4036. (Costim)
  6. Spencer M, *et al.* 2010. *Am. J. Physiol Endocrinol Metab.* 299:1016. [PubMed](#)
  7. Grass GD, *et al.* 2013. *J Biol Chem.* 288:26089. [PubMed](#)

**Description:** CD150 is a 70-95 kD type I transmembrane glycoprotein also known as SLAM or IPO-3. It is a member of the Ig superfamily. It is expressed on a subset of T cells, B cells, dendritic cells, and endothelial cells. The expression of CD150 is upregulated upon activation. CD150 binds to itself as the ligand to be involved in B cell costimulation, proliferation, immunoglobulin production, and signal transduction.

- Antigen References:**
1. Cocks B, *et al.* 1995. *Nature* 376:260.
  2. Pinchouk V, *et al.* 1988. *AntiCancer Res.* 8:1377.
  3. Polacino P, *et al.* 1996. *J. Med. Primatol.* 25:201.
  4. Punnonen J, *et al.* 19

