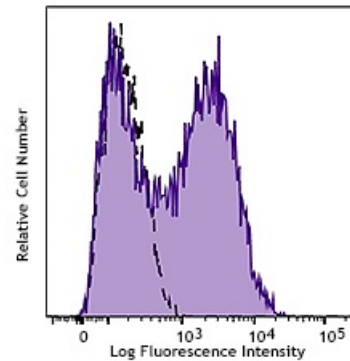


**Brilliant Violet 421™ anti-human CD106****Catalog # /** 2129080 / 100 tests**Size:** 2129075 / 25 tests**Clone:** STA**Isotype:** Mouse IgG1, κ**Reactivity:** Human**Preparation:** The antibody was purified by affinity chromatography and conjugated with Brilliant Violet 421™ under optimal conditions.**Formulation:** Phosphate-buffered solution, pH 7.2, containing 0.09% sodium azide and BSA (origin USA)**Workshop Number:** V A013**Concentration:** Lot-specific

TNF-α stimulated HUVEC cells stained with CD106 (clone STA) Brilliant Violet 421™ (filled histogram) or mouse IgG1, κ Brilliant Violet 421™ isotype control (open histogram).

**Applications:****Applications:** Flow Cytometry

**Recommended Usage:** Each lot of this antibody is quality control tested by immunofluorescent staining with flow cytometric analysis. For flow cytometric staining, the suggested use of this reagent is 5 μL per million cells in 100 μL staining volume or 5 μL per 100 μL of whole blood. It is recommended that the reagent be titrated for optimal performance for each application.

Brilliant Violet 421™ excites at 405 nm and emits at 421 nm. The standard bandpass filter 450/50 nm is recommended for detection. Brilliant Violet 421™ is a trademark of Sirigen Group Ltd.

This product is subject to proprietary rights of Sirigen Inc. and is made and sold under license from Sirigen Inc. The purchase of this product conveys to the buyer a non-transferable right to use the purchased product for research purposes only. This product may not be resold or incorporated in any manner into another product for resale. Any use for therapeutics or diagnostics is strictly prohibited. This product is covered by U.S. Patent(s), pending patent applications and foreign equivalents.

**Application Notes:** Additional reported applications (for the relevant formats) include: immunofluorescence<sup>3</sup>, immunohistochemical staining of acetone-fixed frozen tissue sections, immunoprecipitation<sup>2</sup>, and ELISA<sup>2</sup> capture for sCD106.

**Application References:**

- Schlossman S, *et al.* Eds. 1995. Leucocyte Typing V. Oxford University Press. New York.
- Leca G, *et al.* 1995. *J. Immunol.* 154:1069. (ELISA IP)
- Yen YT, *et al.* 2006. *J. Virol.* 80:2648. (IF) [PubMed](#)
- Dmitrieva NI, *et al.* 2015. *PLoS One.* 10:128870. [PubMed](#)

**Description:** CD106 is a 110 kD single chain type I glycoprotein also known as VCAM-1 and INCAM-110. It is expressed predominantly on activated vascular endothelium but has also been identified on follicular and interfollicular dendritic cells, some macrophages, bone marrow stromal cells, and non-vascular cell populations within joints, kidney, muscle, heart, placenta, and brain. Expression on endothelial cells as well as many other cells is induced by inflammatory stimuli and cytokines. Activated endothelial cells can release soluble forms of CD106 which can be detected in the blood. CD106 binds the integrins CD49d/CD29 (VLA-4) and  $\alpha 4\beta 7$  that contribute to leukocyte adhesion, transmigration, and co-stimulation of T cell proliferation.

**Antigen** 1. Carlos T, *et al.* 1994. *Blood* 84:2068.  
**References:** 2. Jones E, *et al.* 1995. *Nature* 373:539.