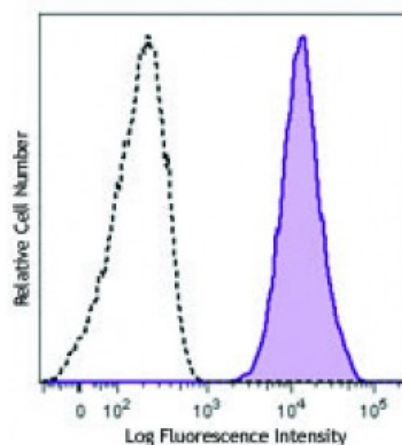


Alexa Fluor® 647 anti-human CD66b

Catalog # / Size:	2125545 / 25 tests 2125550 / 100 tests
Clone:	G10F5
Isotype:	Mouse IgM, κ
Reactivity:	Human
Preparation:	The antibody was purified by affinity chromatography and conjugated with Alexa Fluor® 647 under optimal conditions.
Formulation:	Phosphate-buffered solution, pH 7.2, containing 0.09% sodium azide and 0.2% (w/v) BSA (origin USA).
Workshop Number:	VI MA81
Concentration:	Lot-specific



Human peripheral blood granulocytes were stained with CD66b (clone G10F5) Alexa Fluor® 647 (filled histogram) or mouse IgM, κ Alexa Fluor® 647 isotype control (open histogram).

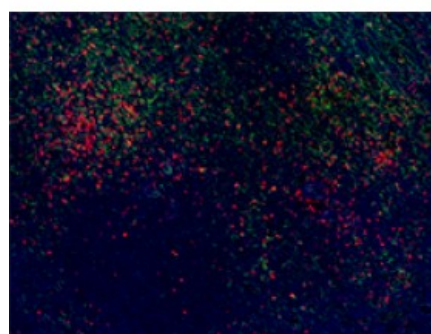
Applications:

Applications:	Flow Cytometry
Recommended Usage:	Each lot of this antibody is quality control tested by immunofluorescent staining with flow cytometric analysis. For flow cytometric staining, the suggested use of this reagent is 5 microL per million cells or 5 microL per 100 microL of whole blood. For immunohistochemical staining on formalin-fixed paraffin-embedded tissue sections, the suggested use of this reagent is 5.0 - 10 microg per ml. It is recommended that the reagent be titrated for optimal performance for each application.

* Alexa Fluor® 647 has a maximum emission of 668 nm when it is excited at 633 nm / 635 nm.

Application Notes:	Additional reported applications (for the relevant formats) include: immunohistochemical staining of acetone-fixed frozen and formalin-fixed paraffin-embedded tissue sections.
---------------------------	---

Application References:	1. Schlossman S, <i>et al.</i> Eds. 1995. Leucocyte Typing V. Oxford University Press. New York. 2. Kishimoto T, <i>et al.</i> Eds. 1997. Leucocyte Typing VI. Garland Publishing Inc. London. 3. Norling LV, <i>et al.</i> 2012. <i>Arterioscler Thromb Vasc Biol.</i> 32:1970. PubMed 4. Meinke P, <i>et al.</i> 2015. <i>Neuroimmunol Discord.</i> 25:127. PubMed
--------------------------------	---



Human paraffin-embedded spleen tissue was stained with Alexa Fluor® 647 anti-human CD66b antibody (red) and co-stained with Alexa Fluor® 594 anti-human CD8a antibody (green). See additional supplemental data for detailed information.

Description: CD66b is a 95-100 kD glycosylphosphatidylinositol (GPI)-linked protein also known as CD67, CGM6, and NCA-95. CD66b is a member of the immunoglobulin superfamily, carcinoembryonic antigen (CEA)-like subfamily. CD66b, expressed on granulocytes, has been reported to induce activation in neutrophils and to be involved in heterophilic adhesion with CD66c.

Antigen 1. Kuijpers T, *et al.* 1993. *J. Immunol.* 151:4934.
References: 2. Kuroki M, *et al.* 1992. *J. Leuk. Biol.* 52:551.