

FITC anti-human CD59

Catalog # / Size: 2123530 / 100 tests

Clone: p282 (H19)

Isotype: Mouse IgG2a, κ

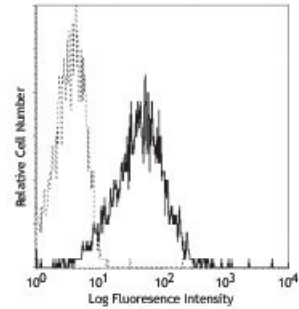
Reactivity: Human

Preparation: The antibody was purified by affinity chromatography, and conjugated with FITC under optimal conditions. The solution is free of unconjugated FITC.

Formulation: Phosphate-buffered solution, pH 7.2, containing 0.09% sodium azide and 0.2% (w/v) BSA (origin USA).

Workshop Number: V S006

Concentration: NULL



Human peripheral blood lymphocytes stained with p282(H19) FITC

Applications:

Applications: Flow Cytometry

Recommended Usage: Each lot of this antibody is quality control tested by immunofluorescent staining with flow cytometric analysis. **Test size products are transitioning from 20 microl to 5 microl per test.** Please check your vial or your CoA to find the suggested use of this reagent per million cells in 100 microl staining volume or per 100 microl of whole blood. It is recommended that the reagent be titrated for optimal performance for each application.

- Application References:**
- Schlossman S, *et al.* Eds. 1995. Leucocyte Typing V. Oxford University Press. New York.
 - Jeong YH, *et al.* 2013. *PLoS One.* 8:63241. [PubMed](#).

Description: CD59 is a 19-25 kD glycosylphosphatidylinositol (GPI)-anchored glycoprotein also known as protectin, MACIF, and H19. It is broadly expressed on hematopoietic and non-hematopoietic cells. CD59 inhibits the cytolytic activity of complement by binding to C9, inhibiting incorporation into C5b-8, and preventing the terminal steps in complement polymerization of the membrane attack complex. CD59 has also been reported to play a role in T cell activation.

- Antigen References:**
- Davies A, *et al.* 1993. *Immunol. Res.* 12:258.
 - Lachmann P. 1991. *Immunol. Today* 12:312.
 - Liszewski M, *et al.* 1996. *Adv. Immunol.* 61:201.