

**Purified anti-human CD59**

**Catalog # / Size:** 2123505 / 25 µg  
2123510 / 100 µg

**Clone:** p282 (H19)

**Isotype:** Mouse IgG2a, κ

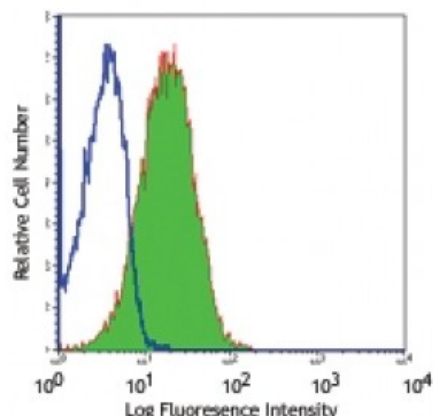
**Reactivity:** Human

**Preparation:** The antibody was purified by affinity chromatography.

**Formulation:** Phosphate-buffered solution, pH 7.2, containing 0.09% sodium azide.

**Workshop Number:** V S006

**Concentration:** 0.5



Human peripheral blood lymphocytes stained with purified p282, followed by anti-mouse IgGs FITC

**Applications:**

**Applications:** Flow Cytometry

**Recommended Usage:** Each lot of this antibody is quality control tested by immunofluorescent staining with flow cytometric analysis. For flow cytometric staining, the suggested use of this reagent is  $\leq 2.0$  microg per  $10^6$  cells in 100 microL volume or 100 microL of whole blood. It is recommended that the reagent be titrated for optimal performance for each application.

**Application References:** 1. Schlossman S, *et al.* Eds. 1995. Leucocyte Typing V. Oxford University Press. New York.

**Description:** CD59 is a 19-25 kD glycosylphosphatidylinositol (GPI)-anchored glycoprotein also known as protectin, MACIF, and H19. It is broadly expressed on hematopoietic and non-hematopoietic cells. CD59 inhibits the cytolytic activity of complement by binding to C9, inhibiting incorporation into C5b-8, and preventing the terminal steps in complement polymerization of the membrane attack complex. CD59 has also been reported to play a role in T cell activation.

**Antigen References:** 1. Davies A, *et al.* 1993. *Immunol. Res.* 12:258.  
2. Lachmann P. 1991. *Immunol. Today* 12:312.  
3. Liszewski M, *et al.* 1996. *Adv. Immunol.* 61:201.