

PE/Fire™ 700 anti-human CD45RA

Catalog # / 2120860 / 100 tests
Size: 2120855 / 25 tests

Clone: HI100

Isotype: Mouse IgG2b, κ

Immunogen: Human T cells from a T-ALL patient.

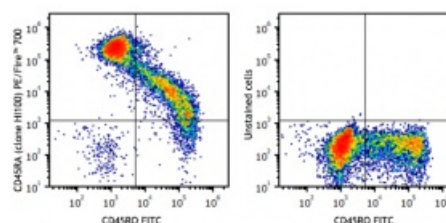
Reactivity: Human, Other

Preparation: The antibody was purified by affinity chromatography and conjugated with PE/Fire™ 700 under optimal conditions.

Formulation: Phosphate-buffered solution, pH 7.2, containing 0.09% sodium azide and 0.2% (w/v) BSA (origin USA)

Workshop Number: IV N906

Concentration: Lot-specific



Human peripheral blood lymphocytes were stained with anti-human CD45RO FITC and anti-human CD45RA (clone HI100) PE/Fire™ 700 (left) or stained with anti-human CD45RO FITC only (right).

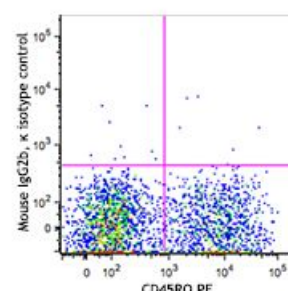
Applications:

Applications: Flow Cytometry

Recommended Usage: Each lot of this antibody is quality control tested by immunofluorescent staining with flow cytometric analysis. For flow cytometric staining, the suggested use of this reagent is 5 µL per million cells in 100 µL staining volume or 5 µL per 100 µL of whole blood. It is recommended that the reagent be titrated for optimal performance for each application.

* PE/Fire™ 700 has a maximum excitation of 565 nm and a maximum emission of 695 nm.

Application Notes: Additional reported applications (for relevant formats of this clone) include: inhibition of CD45 functions², immunohistochemical staining of frozen tissue sections³ and formalin-fixed paraffin-embedded tissue sections⁴, and immunocytochemistry^{15,16}.



Human peripheral blood lymphocytes were stained with anti-human CD4 FITC and anti-human CD25 (clone M-A251) Spark YG™ 581 (left) or anti-human CD4 FITC only (right).

**Application
References:**

1. Knapp W, et al. 1989. Leucocyte Typing IV. Oxford University Press. New York.
 2. Yamada T, et al. 2002. *J. Biol. Chem.* 277:28830. (WB, Block)
 3. Weninger W, et al. 2003 *J. Immunol.* 170:4638. (IHC-F)
 4. Imanguli MM, et al. 2009. *Blood.* 113:3620 (IHC-P)
 5. Roque S, et al. 2007. *J. Immunol.* 178:8028. (FC) [PubMed](#)
 6. Smeltz RB. 2007. *J. Immunol.* 178:4786. (FC) [PubMed](#)
 7. Palendira U, et al. 2008. *Blood* (FC) [PubMed](#)
 8. Kuttruff S, et al. 2009. *Blood* 113:358. (FC) [PubMed](#)
 9. Thakral D, et al. 2008. *J. Immunol.* 180:7431. (FC) [PubMed](#)
 10. Alanio C, et al. 2010. *Blood* 115:3718. (FC) [PubMed](#)
 11. Iannello A, et al. 2010. *J. Immunol.* 184:114. (FC) [PubMed](#)
 12. Yoshino N, et al. 2000. *Exp. Anim. (Tokyo)* 49:97. (FC)
 13. Guereau-de-Arellan M, et al. 2011. *Brain.* 134:3578. [PubMed](#)
 14. Canque B, et al. 2000. *Blood* 96:3748. (ICC)
 15. Imanguli MM, et al. 2009. *Blood* 13:3620. (ICC)
 16. Stoeckius M, et al. 2017. *Nat. Methods.* 14:865. (PG)
 17. Peterson VM, et al. 2017. *Nat. Biotechnol.* 35:936. (PG)
-

Description:

CD45RA is a 205-220 kD single chain type I glycoprotein. It is an exon 4 splice variant of the tyrosine phosphatase CD45. The CD45RA isoform is expressed on resting/naïve T cells, medullary thymocytes, B cells and monocytes. CD45RA enhances both T cell receptor and B cell receptor signaling. CD45 non-covalently associates with lymphocyte phosphatase-associated phosphoprotein (LPAP) on T and B lymphocytes. CD45 has been reported to be associated with several other cell surface antigens including CD1, CD2, CD3, and CD4. CD45 has also been reported to bind galectin-1. CD45 isoform expression can change in response to cytokines.

**Antigen
References:**

1. Thomas M. 1989. *Annu. Rev. Immunol.* 7:339.
2. Trowbridge I, et al. 1994. *Annu. Rev. Immunol.* 12:85.