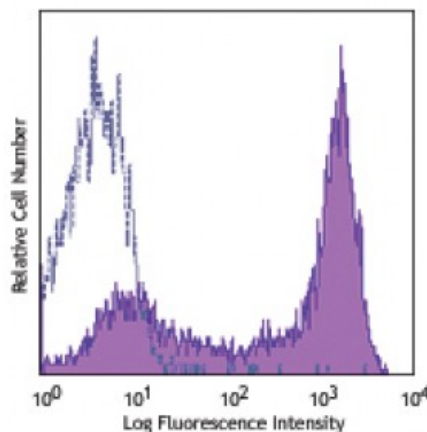


PE/Cy7 anti-human CD45RA

Catalog # / Size:	2120630 / 100 tests 2120625 / 25 tests
Clone:	HI100
Isotype:	Mouse IgG2b, κ
Reactivity:	Human
Preparation:	The antibody was purified by affinity chromatography and conjugated with PE/Cy7 under optimal conditions. The solution is free of unconjugated PE/Cy7 and unconjugated antibody.
Formulation:	Phosphate-buffered solution, pH 7.2, containing 0.09% sodium azide and 0.2% (w/v) BSA (origin USA).
Workshop Number:	IV N906
Concentration:	Lot-specific



Human peripheral blood lymphocytes were stained with HI100 PE/Cy7 (filled histogram) or mouse IgG2b, κ PE/Cy7 isotype control (open histogram).

Applications:

Applications: Flow Cytometry

Recommended Usage: Each lot of this antibody is quality control tested by immunofluorescent staining with flow cytometric analysis. **Test size products are transitioning from 20 microL to 5 microL per test.** Please check your vial or your CoA to find the suggested use of this reagent per million cells in 100 microL staining volume or per 100 microL of whole blood. It is recommended that the reagent be titrated for optimal performance for each application.

Application Notes: Additional reported applications (for relevant formats of this clone) include: inhibition of CD45 functions², immunohistochemical staining of frozen tissue sections³ and formalin-fixed paraffin-embedded tissue sections⁴, and immunofluorescence^{15,16}.

- Application References:**
- Knapp W, *et al.* 1989. Leucocyte Typing IV. Oxford University Press. New York.
 - Yamada T, *et al.* 2002. *J. Biol. Chem.* 277:28830. (WB, Block)
 - Weninger W, *et al.* 2003 *J. Immunol.* 170:4638. (IHC)
 - Imanguli MM, *et al.* 2009. *Blood.* 113:3620 (IHC)
 - Roque S, *et al.* 2007. *J. Immunol.* 178:8028. (FC) [PubMed](#)
 - Smeltz RB. 2007. *J. Immunol.* 178:4786. (FC) [PubMed](#)
 - Palendira U, *et al.* 2008. *Blood* (FC) [PubMed](#)
 - Kuttruff S, *et al.* 2009. *Blood* 113:358. (FC) [PubMed](#)
 - Thakral D, *et al.* 2008. *J. Immunol.* 180:7431. (FC) [PubMed](#)
 - Alanio C, *et al.* 2010. *Blood* 115:3718. (FC) [PubMed](#)
 - Iannello A, *et al.* 2010. *J. Immunol.* 184:114. (FC) [PubMed](#)
 - Yoshino N, *et al.* 2000. *Exp. Anim. (Tokyo)* 49:97. (FC)
 - Guereau-de-Arellan M, *et al.* 2011. *Brain.* 134:3578. [PubMed](#)
 - Canque B, *et al.* 2000. *Blood* 96:3748. (IF)
 - Imanguli MM, *et al.* 2009. *Blood* 13:3620. (IF)

Description: CD45RA is a 205-220 kD single chain type I glycoprotein. It is an exon 4 splice variant of the tyrosine phosphatase CD45. The CD45RA isoform is expressed on resting/naïve T cells, medullary thymocytes, B cells and monocytes. CD45RA

enhances both T cell receptor and B cell receptor signaling. CD45 non-covalently associates with lymphocyte phosphatase-associated phosphoprotein (LPAP) on T and B lymphocytes. CD45 has been reported to be associated with several other cell surface antigens including CD1, CD2, CD3, and CD4. CD45 has also been reported to bind galectin-1. CD45 isoform expression can change in response to cytokines.

Antigen
References:

1. Thomas M. 1989. *Annu. Rev. Immunol.* 7:339.
2. Trowbridge I, *et al.* 1994. *Annu. Rev. Immunol.* 12:85.