

PE/Cy5 anti-human CD45

Catalog # / Size: 2120045 / 25 tests
2120050 / 100 tests

Clone: HI30

Isotype: Mouse IgG1, κ

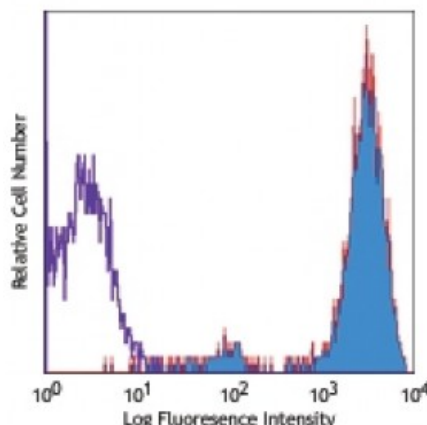
Reactivity: Human

Preparation: The antibody was purified by affinity chromatography, and conjugated with PE/Cy5 under optimal conditions. The solution is free of unconjugated PE/Cy5 and unconjugated antibody.

Formulation: Phosphate-buffered solution, pH 7.2, containing 0.09% sodium azide and 0.2% (w/v) BSA (origin USA).

Workshop Number: IV N816

Concentration: Lot-specific



Human peripheral blood lymphocytes stained with HI30 PE/CY5

Applications:

Applications: Flow Cytometry

Recommended Usage: Each lot of this antibody is quality control tested by immunofluorescent staining with flow cytometric analysis. **Test size products are transitioning from 20 microL to 5 microL per test.** Please check your vial or your CoA to find the suggested use of this reagent per million cells in 100 microL staining volume or per 100 microL of whole blood. It is recommended that the reagent be titrated for optimal performance for each application.

Application Notes: Additional reported applications (for the relevant formats) include: immunohistochemical staining of acetone-fixed frozen tissue sections and formalin-fixed paraffin-embedded tissue sections⁹, inhibition of CD45 functions⁴, immunofluorescence¹¹, and Western blotting³.

It was found that the HI30 clone and the 2D1 clone can cross block each other's binding.

- Application References:**
- Knapp W, *et al.* 1989. Leucocyte Typing IV. Oxford University Press. New York.
 - Kishihara K, *et al.* 1993. *Cell* 74:143.
 - Esser M, *et al.* 2001. *J. Virol.* 75:6173. (WB)
 - Yamada T, *et al.* 2002. *J. Biol. Chem.* 277:28830.
 - Nagano M, *et al.* 2007. *Blood* 110:151.
 - Jiang Q, *et al.* 2008. *Blood* 112:2858. [PubMed](#)
 - Morozov A, *et al.* 2010. *Clin Cancer Res.* 16:5630. [PubMed](#)
 - Yoshino N, *et al.* 2000. *Exp. Anim. (Tokyo)* 49:97. (FC)
 - Friedman T, *et al.* 1999. *J. Immunol.* 162:5256. (IHC)
 - Oeztuerk-Winder F, *et al.* 2012. *EMBO J.* 31:3431. (FC) [PubMed](#)
 - Rees LE, *et al.* 2003. *Clin. Exp. Immunol.* 134:497. (IF)
 - Lee J, *et al.* 2015. *J Exp Med.* 212:385. [PubMed](#)
 - Breton G, *et al.* 2015. *J Exp Med.* 212:401. [PubMed](#)
 - Marquardt N, *et al.* 2015. *J Immunol.* 6:2467. [PubMed](#)

Description: CD45 is a 180-240 kD single chain type I membrane glycoprotein also known as

For research use only. Not for diagnostic use. Not for resale. Sony Biotechnology Inc. will not be held responsible for patent infringement or other violations that may occur with the use of our products.

Sony Biotechnology Inc. 1730 North First Street, San Jose, CA 95112 www.sonybiotechnology.com

leukocyte common antigen (LCA) and T200. It is a tyrosine phosphatase expressed on the plasma membrane of all hematopoietic cells, except erythrocytes and platelets. CD45 is a signaling molecule that regulates a variety of cellular processes including cell growth, differentiation, cell cycle, and oncogenic transformation. CD45 plays a critical role in T and B cell antigen receptor-mediated activation by dephosphorylating substrates including p56Lck, p59Fyn, and other Src family kinases. CD45 non-covalently associates with lymphocyte phosphatase-associated phosphoprotein (LPAP) on T and B lymphocytes. CD45 has been reported to bind galectin-1 and to be associated with several other cell surface antigens including CD1, CD2, CD3, and CD4.

Antigen
References:

1. Thomas M. 1989. *Annu. Rev. Immunol.* 7:339.
2. Trowbridge I, *et al.* 1994. *Annu. Rev. Immunol.* 12:85.