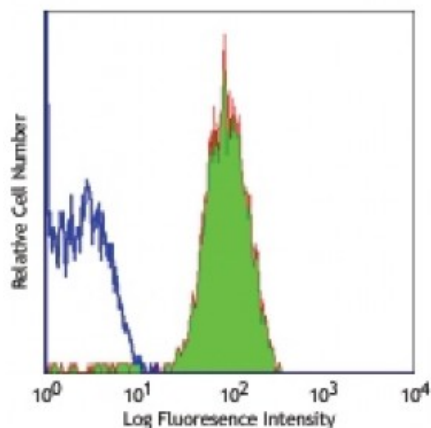


## FITC anti-human CD41

<b>Catalog # / Size:</b>	2118520 / 100 tests 2118515 / 25 tests
<b>Clone:</b>	HIP8
<b>Isotype:</b>	Mouse IgG1, $\kappa$
<b>Reactivity:</b>	Human
<b>Preparation:</b>	The antibody was purified by affinity chromatography, and conjugated with FITC under optimal conditions. The solution is free of unconjugated FITC.
<b>Formulation:</b>	Phosphate-buffered solution, pH 7.2, containing 0.09% sodium azide and 0.2% (w/v) BSA (origin USA).
<b>Workshop Number:</b>	IV P38
<b>Concentration:</b>	Lot-specific



Human peripheral blood platelets stained with HIP8 FITC

## Applications:

**Applications:** Flow Cytometry

**Recommended Usage:** Each lot of this antibody is quality control tested by immunofluorescent staining with flow cytometric analysis. **Test size products are transitioning from 20 microL to 5 microL per test.** Please check your vial or your CoA to find the suggested use of this reagent per million cells in 100 microL staining volume or per 100 microL of whole blood. It is recommended that the reagent be titrated for optimal performance for each application.

**Application Notes:** Additional reported applications (for the relevant formats) include: immunohistochemical staining of acetone-fixed frozen tissue sections and blocking of platelet aggregation<sup>2</sup>. The HIP8 antibody has been reported to block the activation of platelets by various stimuli, including collagen, and ADP.

**Application References:**

1. Knapp W, *et al.* 1989. Leucocyte Typing IV. Oxford University Press. New York.
2. McCarty OJT, *et al.* 2000. *Blood* 96:1789.
3. Yoshino N, *et al.* 2000. *Exp. Anim. (Tokyo)* 49:97. (FC)
4. Luni C, *et al.* 2011. *Biotechnol Prog.* 27:1154. [PubMed](#)
5. Headland SE, *et al.* 2014. *Sci Rep.* 4:5237. [PubMed](#)

**Description:** CD41 is a 125/25 kD  $\alpha$  subunit of the gpIIb/IIIa (CD41/CD61) complex. CD41 is a heterodimer composed of a heavy chain (gpIIb $\alpha$ ) and light chain (gpIIb $\beta$ ) linked by a single disulfide bond. It is a member of the integrin family primarily expressed on platelets and megakaryocytes. CD41 has been reported to be involved with platelet aggregation and platelet attachment to the ECM. CD41/CD61 complex acts as the receptor for fibrinogen, fibronectin, Von Willebrand factor, and thrombin.

**Antigen References:**

1. Denzin L, *et al.* 1996. *J. Exp. Med.* 184:2153.
2. Denzin L, *et al.* 1995. *Cell* 82:155.
3. Riberdy J, *et al.* 1994. *J. Cell Biol.* 125:1225.