

PE/Dazzle™ 594 anti-human CD31

Catalog # / Size: 2115645 / 25 tests
2115650 / 100 tests

Clone: WM59

Isotype: Mouse IgG1, κ

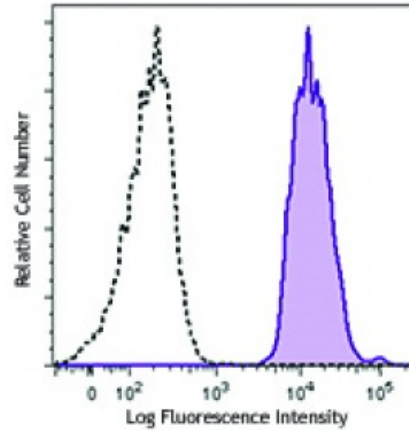
Reactivity: Human

Preparation: The antibody was purified by affinity chromatography and conjugated with PE/Dazzle™ 594 under optimal conditions. The solution is free of unconjugated PE/Dazzle™ 594 and unconjugated antibody.

Formulation: Phosphate-buffered solution, pH 7.2, containing 0.09% sodium azide and 0.2% (w/v) BSA (origin USA).

Workshop Number: V P025

Concentration: 0.2



Human peripheral blood granulocytes were stained with CD31 (clone WM59) PE/Dazzle™ 594 (filled histogram) or mouse IgG1, κ PE/Dazzle™ 594 isotype control (open histogram).

Applications:

Applications: Flow Cytometry

Recommended Usage: Each lot of this antibody is quality control tested by immunofluorescent staining with flow cytometric analysis. For flow cytometric staining, the suggested use of this reagent is 5 microL per million cells or 5 microL per 100 microL of whole blood. It is recommended that the reagent be titrated for optimal performance for each application.

* PE/Dazzle™ 594 has a maximum excitation of 566 nm and a maximum emission of 610 nm.

This product is subject to proprietary rights of Sirigen Inc. and is made and sold under license from Sirigen Inc. The purchase of this product conveys to the buyer a non-transferable right to use the purchased product for research purposes only. This product may not be resold or incorporated in any manner into another product for resale. Any use for therapeutics or diagnostics is strictly prohibited. This product is covered by U.S. Patent(s), pending patent applications and foreign equivalents.

Application Notes: Clone WM59 has been reported to recognize the D2 extracellular portion of CD31.

Additional reported applications (for the relevant formats) include: immunofluorescence microscopy², immunohistochemical staining of acetone-fixed frozen tissue sections⁸, and blocking of platelet aggregation³. Clone WM59 is not recommended for immunohistochemical staining of formalin-fixed paraffin-embedded sections. The LEAF™ purified antibody (Endotoxin <0.1 EU/μg, Azide-Free, 0.2 μm filtered) is recommended for functional assays (Cat. No. 303108).

- Application References:**
- Schlossman S, *et al.* Eds. 1995. Leucocyte Typing V Oxford University Press. New York.
 - Muczynski KA, *et al.* 2003. *J. Am. Soc. Nephrol.* 14:1336. (IF)
 - Wu XW, *et al.* 1997. *Arterioscl. Throm. Vas.* 17:3154. (Block)
 - Nagano M, *et al.* 2007. *Blood* 110:151. (FC) [PubMed](#)

5. MacFadyen JR, *et al.* 2005. *FEBS Lett.* 579:2569. [PubMed](#)
 6. Yoshino N, *et al.* 2000. *Exp. Anim. (Tokyo)* 49:97. (FC)
 7. Sestak K, *et al.* 2007. *Vet. Immunol. Immunopathol.* 119:21.
 8. Wicki A, *et al.* 2012. *Clin. Cancer Res.* 18:454. (FC, IHC) [PubMed](#)
 9. Oeztuerk-Winder F, *et al.* 2012. *EMBO J.* 31:3431. (FC) [PubMed](#)
-

Description: CD31 is a 130-140 kD type I transmembrane glycoprotein also known as platelet endothelial cell adhesion molecule-1 (PECAM-1) or Endocam. It is expressed on monocytes, platelets, granulocytes, endothelial cells and lymphocyte subsets. CD31 has been reported to bind CD38 and be involved in wound healing, angiogenesis, and cellular migration in an inflammatory situation.

- Antigen**
- References:**
1. DeLisser H, *et al.* 1994. *Immunol. Today* 15:490.
 2. Newman P, 1997. *J. Clin. Invest.* 99:3.
 3. Fawcett J, *et al.* 1995. *J. Cell Biol.* 128:1229.