

Pacific Blue™ anti-human CD27

Catalog # / Size: 2114110 / 100 µg
2114105 / 25 µg

Clone: O323

Isotype: Mouse IgG1, κ

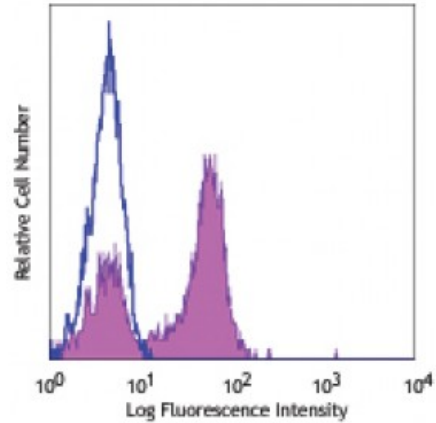
Reactivity: Human

Preparation: The antibody was purified by affinity chromatography, and conjugated with Pacific Blue™ under optimal conditions. The solution is free of unconjugated Pacific Blue™.

Formulation: Phosphate-buffered solution, pH 7.2, containing 0.09% sodium azide.

Workshop Number: IV T-186

Concentration: 0.5



Human peripheral blood lymphocytes stained with O323 Pacific Blue™

Applications:

Applications: Flow Cytometry

Recommended Usage: Each lot of this antibody is quality control tested by immunofluorescent staining with flow cytometric analysis. For flow cytometric staining, the suggested use of this reagent is ≤1.0 microg per million cells in 100 microL volume or 100 microL of whole blood. It is recommended that the reagent be titrated for optimal performance for each application.

* Pacific Blue™ has a maximum emission of 455 nm when it is excited at 405 nm. Prior to using Pacific Blue™ conjugate for flow cytometric analysis, please verify your flow cytometer's capability of exciting and detecting the fluorochrome.

Application References:

1. Knapp W, *et al.* Eds. 1989. Leucocyte Typing IV. Oxford University Press. New York.
2. Correia DV, *et al.* 2011. *Blood* 118:992. (FC) [PubMed](#)

Description: CD27 is a 50-55 kD type I membrane protein also known as S152 and T14. It is a lymphocyte-specific member of the TNF-receptor superfamily. CD27 is expressed on medullary thymocytes, virtually all mature T cells, some B cells, and NK cells. CD27 binds to CD70 and plays an important role in costimulation of T cell activation, and regulation of B cell differentiation and proliferation. The cytoplasmic domains of CD27 have also been shown to interact with TRAF2 and TRAF5 to elicit NF-κB and SAPK/JNK activation.

Antigen References:

1. Hintzen R, *et al.* 1994. *Immunol. Today* 15:307.
2. Agematsu K, *et al.* 1995. *J. Immunol.* 154:3627.