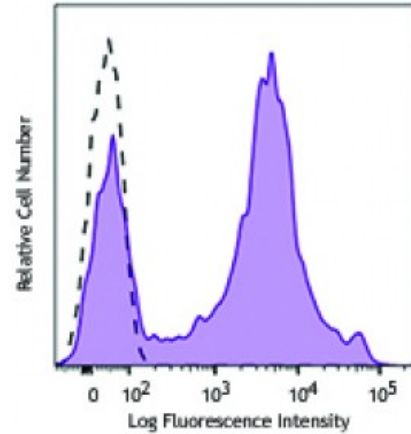


Biotin anti-human CD26

Catalog # / Size: 2113590 / 100 µg
Clone: BA5b
Isotype: Mouse IgG2a, κ
Reactivity: Human
Preparation: The antibody was purified by affinity chromatography and conjugated with biotin under optimal conditions. The solution is free of unconjugated biotin.
Formulation: Phosphate-buffered solution, pH 7.2, containing 0.09% sodium azide.
Workshop Number: VI N-L078
Concentration: 0.5



Human peripheral blood lymphocytes were stained with biotinylated CD26 (clone BA5b) (filled histogram), or biotinylated mouse IgG2a, κ isotype control (open histogram), followed by SAV-PE.

Applications:

Applications: Flow Cytometry
Recommended Usage: Each lot of this antibody is quality control tested by immunofluorescent staining with flow cytometric analysis. For flow cytometric staining, the suggested use of this reagent is ≤0.5 microg per million cells in 100 microL volume. It is recommended that the reagent be titrated for optimal performance for each application.

Application References: 1. Kishimoto T, *et al.* Eds. 1997. Leucocyte Typing VI. Garland Press. London.
 2. Schlossman S, *et al.* Eds. 1995. Leucocyte Typing V. Oxford University Press. New York.

Description: CD26 is a 110 kD type II membrane protein also known as ADA-binding protein and dipeptidyl peptidase IV (DPP-IV). It is a member of the peptidase and ectoenzyme family. CD26 is expressed on the membrane of mature thymocytes, T lymphocytes (upregulated upon activation), B cells, NK cells, and macrophages. CD26 cleaves off N-terminal X-Pro and X-Ala dipeptides from polypeptides. It plays an integral role as a costimulatory molecule in T cell activation. CD26 may interact with extracellular matrix proteins such as fibronectin or collagen, CD45 and ADA.

Antigen References: 1. Kameoka J, *et al.* 1993. *Science* 261:466.
 2. Dang N, *et al.* 1990. *J. Exp. Med.* 172:649.