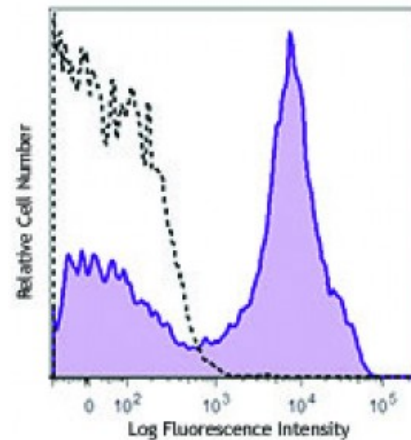


PE/Cy7 anti-human CD26

Catalog # / Size:	2113565 / 25 tests 2113570 / 100 tests
Clone:	BA5b
Isotype:	Mouse IgG2a, κ
Reactivity:	Human
Preparation:	The antibody was purified by affinity chromatography and conjugated with PE/Cy7 under optimal conditions. The solution is free of unconjugated PE/Cy7 and unconjugated antibody.
Formulation:	Phosphate-buffered solution, pH 7.2, containing 0.09% sodium azide and 0.2% (w/v) BSA (origin USA).
Workshop Number:	VI N-L078
Concentration:	Lot-specific



Human peripheral blood lymphocytes were stained with CD26 (clone BA5b) PE/Cy7 (filled histogram) or mouse IgG2a, κ PE/Cy7 isotype control (open histogram).

Applications:

Applications: Flow Cytometry

Recommended Usage: Each lot of this antibody is quality control tested by immunofluorescent staining with flow cytometric analysis. For flow cytometric staining, the suggested use of this reagent is 5 microL per million cells or 5 microL per 100 microL of whole blood. It is recommended that the reagent be titrated for optimal performance for each application.

Application References: 1. Kishimoto T, *et al.* Eds. 1997. Leucocyte Typing VI. Garland Press. London.
2. Schlossman S, *et al.* Eds. 1995. Leucocyte Typing V. Oxford University Press. New York.

Description: CD26 is a 110 kD type II membrane protein also known as ADA-binding protein and dipeptidyl peptidase IV (DPP-IV). It is a member of the peptidase and ectoenzyme family. CD26 is expressed on the membrane of mature thymocytes, T lymphocytes (upregulated upon activation), B cells, NK cells, and macrophages. CD26 cleaves off N-terminal X-Pro and X-Ala dipeptides from polypeptides. It plays an integral role as a costimulatory molecule in T cell activation. CD26 may interact with extracellular matrix proteins such as fibronectin or collagen, CD45 and ADA.

Antigen References: 1. Kameoka J, *et al.* 1993. *Science* 261:466.
2. Dang N, *et al.* 1990. *J. Exp. Med.* 172:649.