

Brilliant Violet 605™ anti-human CD25

Catalog # / Size: 2113160 / 100 tests
2113155 / 25 tests

Clone: BC96

Isotype: Mouse IgG1, κ

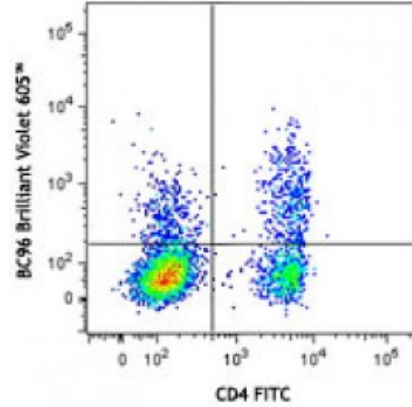
Reactivity: Human

Preparation: The antibody was purified by affinity chromatography and conjugated with Brilliant Violet 605™ under optimal conditions. The solution is free of unconjugated Brilliant Violet 605™ and unconjugated antibody.

Formulation: Phosphate-buffered solution, pH 7.2, containing 0.09% sodium azide and BSA (origin USA).

Workshop Number: V T-072

Concentration: Lot-specific



Human peripheral blood lymphocytes were stained with CD4 FITC and CD25 (clone BC96) Brilliant Violet 605™.

Applications:

Applications: Flow Cytometry

Recommended Usage: Each lot of this antibody is quality control tested by immunofluorescent staining with flow cytometric analysis. For flow cytometric staining, the suggested use of this reagent is ≤5 microL per million cells or 5 microL per 100 microL of whole blood. It is recommended that the reagent be titrated for optimal performance for each application.

Brilliant Violet 605™ excites at 405 nm and emits at 603 nm. The bandpass filter 610/20 nm is recommended for detection, although filter optimization may be required depending on other fluorophores used. **Be sure to verify that your cytometer configuration and software setup are appropriate for detecting this channel.** Refer to your instrument manual or manufacturer for support. Brilliant Violet 605™ is a trademark of Sirigen Group Ltd.

This product is subject to proprietary rights of Sirigen Inc. and is made and sold under license from Sirigen Inc. The purchase of this product conveys to the buyer a non-transferable right to use the purchased product for research purposes only. This product may not be resold or incorporated in any manner into another product for resale. Any use for therapeutics or diagnostics is strictly prohibited. This product is covered by U.S. Patent(s), pending patent applications and foreign equivalents.

Application Notes: Additional reported applications include: immunofluorescence³.

Application References:

- Schlossman S, *et al.* Eds. 1995. Leucocyte Typing V. Oxford University Press. New York.
- Kmieciak M, *et al.* 2009. *J. Transl. Med.* 7:89. (FC) [PubMed](#)
- Ernst CW, *et al.* 2007. *Clin. Exp. Immunol.* 148:271. (IF) [PubMed](#)

Description: CD25 is a 55 kD type I transmembrane glycoprotein also known as the low affinity

IL-2 receptor α chain or Tac. It is expressed on progenitor lymphocytes, activated T and B cells, and activated monocytes/macrophages. CD25 is also expressed on a subset of non-stimulated CD4⁺ T cells termed T regulatory cells. CD25 associates with the IL-2 receptor β (CD122) and common γ chains (CD132) to form the high affinity IL-2R complex.

- Antigen**
- References:**
1. Taniguchi T, *et al.* 1993. *Cell* 73:5.
 2. Waldmann T. 1991. *J. Biol. Chem.* 266:2681.