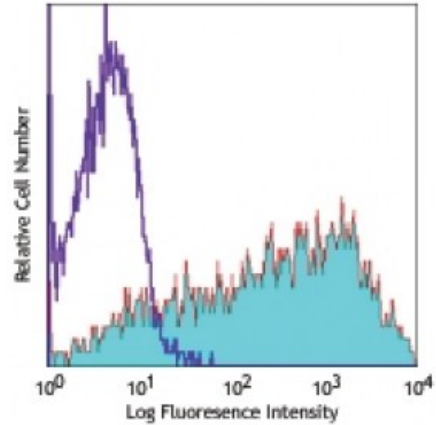


**Biotin anti-human CD25**

**Catalog # / Size:** 2113120 / 100 µg  
**Clone:** BC96  
**Isotype:** Mouse IgG1, κ  
**Reactivity:** Human  
**Preparation:** The antibody was purified by affinity chromatography, and conjugated with biotin under optimal conditions. The solution is free of unconjugated biotin.  
**Formulation:** Phosphate-buffered solution, pH 7.2, containing 0.09% sodium azide.  
**Workshop Number:** V T-072  
**Concentration:** 0.5



PHA-stimulated (3 day) human peripheral blood lymphocytes were stained with biotinylated CD25 (clone BC96) (filled histogram) or biotinylated mouse IgG1, κ isotype control (open histogram).

**Applications:**

**Applications:** Flow Cytometry

**Recommended Usage:** Each lot of this antibody is quality control tested by immunofluorescent staining with flow cytometric analysis. For flow cytometric staining, the suggested use of this reagent is ≤0.5 microg per million cells in 100 microL volume. It is recommended that the reagent be titrated for optimal performance for each application.

**Application Notes:** Additional reported applications include: immunofluorescence3.

**Application References:**

- Schlossman S, *et al.* Eds. 1995. Leucocyte Typing V. Oxford University Press. New York.
- Kmieciak M, *et al.* 2009. *J. Transl. Med.* 7:89. (FC) [PubMed](#)
- Ernst CW, *et al.* 2007. *Clin. Exp. Immunol.* 148:271. (IF) [PubMed](#)
- Sugiyama D, *et al.* 2013. *PNAS.* 110:17945. [PubMed](#)

**Description:** CD25 is a 55 kD type I transmembrane glycoprotein also known as the low affinity IL-2 receptor α chain or Tac. It is expressed on progenitor lymphocytes, activated T and B cells, and activated monocytes/macrophages. CD25 is also expressed on a subset of non-stimulated CD4<sup>+</sup> T cells termed T regulatory cells. CD25 associates with the IL-2 receptor β (CD122) and common γ chains (CD132) to form the high affinity IL-2R complex.

**Antigen References:**

- Taniguchi T, *et al.* 1993. *Cell* 73:5.
- Waldmann T. 1991. *J. Biol. Chem.* 266:2681.