

Alexa Fluor® 700 anti-human CD25

Catalog # / Size: 2113110 / 100 µg
2113105 / 25 µg

Clone: BC96

Isotype: Mouse IgG1, κ

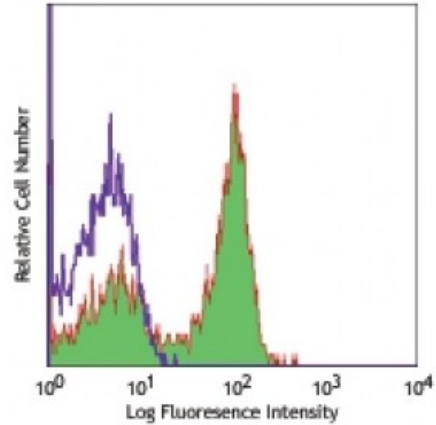
Reactivity: Human

Preparation: The antibody was purified by affinity chromatography, and conjugated with Alexa Fluor® 700 under optimal conditions.

Formulation: Phosphate-buffered solution, pH 7.2, containing 0.09% sodium azide.

Workshop Number: V T-072

Concentration: 0.5



PHA-stimulated (3 day) human peripheral blood lymphocytes were stained with CD25 (clone BC96) Alexa Fluor® 700 (filled histogram) or mouse IgG1, κ Alexa Fluor® 700 isotype control (open histogram).

Applications:

Applications: Flow Cytometry

Recommended Usage: Each lot of this antibody is quality control tested by immunofluorescent staining with flow cytometric analysis. The suggested use of this reagent is ≤0.5 microg per million cells in 100 microL volume. It is highly recommended that the reagent be titrated for optimal performance for each application.

* Alexa Fluor® 700 has a maximum emission of 719 nm when it is excited at 633 nm / 635 nm. Prior to using Alexa Fluor® 700 conjugate for flow cytometric analysis, please verify your flow cytometer's capability of exciting and detecting the fluorochrome.

Application Notes: Additional reported applications include: immunofluorescence3.

- Application References:**
- Schlossman S, *et al.* Eds. 1995. Leucocyte Typing V. Oxford University Press. New York.
 - Kmieciak M, *et al.* 2009. *J. Transl. Med.* 7:89. (FC) [PubMed](#)
 - Ernst CW, *et al.* 2007. *Clin. Exp. Immunol.* 148:271. (IF) [PubMed](#)
 - Fang L, *et al.* 2013. *Neuro Oncol.* 15:1479. [PubMed](#)

Description: CD25 is a 55 kD type I transmembrane glycoprotein also known as the low affinity IL-2 receptor α chain or Tac. It is expressed on progenitor lymphocytes, activated T and B cells, and activated monocytes/macrophages. CD25 is also expressed on a subset of non-stimulated CD4⁺ T cells termed T regulatory cells. CD25 associates with the IL-2 receptor β (CD122) and common γ chains (CD132) to form the high affinity IL-2R complex.

- Antigen References:**
- Taniguchi T, *et al.* 1993. *Cell* 73:5.
 - Waldmann T. 1991. *J. Biol. Chem.* 266:2681.