

Pacific Blue™ anti-human CD25

Catalog # / Size: 2113100 / 100 µg
2113135 / 100 tests

Clone: BC96

Isotype: Mouse IgG1, κ

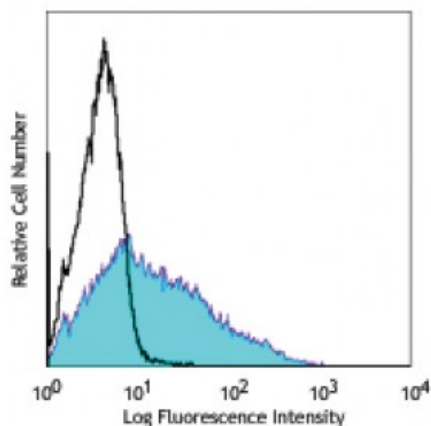
Reactivity: Human

Preparation: The antibody was purified by affinity chromatography, and conjugated with Pacific Blue™ under optimal conditions. The solution is free of unconjugated Pacific Blue™.

Formulation: test size: Phosphate-buffered solution, pH 7.2, containing 0.09% sodium azide and 0.2% (w/v) BSA (origin USA).
microg sizes: Phosphate-buffered solution, pH 7.2, containing 0.09% sodium azide.

Workshop Number: V T-072

Concentration: test size: lot-specific; microg sizes: 0.5 mg/ml



PHA-stimulated (3 day) human peripheral blood lymphocytes were stained with CD25 (clone BC96) Pacific Blue™ (filled histogram) or mouse IgG1, κ Pacific Blue™ isotype control (open histogram).

Applications:

Applications: Flow Cytometry

Recommended Usage: Each lot of this antibody is quality control tested by immunofluorescent staining with flow cytometric analysis.
For test size, the suggested use of this reagent for immunofluorescent staining is 5 µL per 10⁶ cells in 100 µL volume.
For microg sizes, the suggested use of this reagent for immunofluorescent staining is ≤1.0 µg per 10⁶ cells in 100 µL volume.
It is recommended that the reagent be titrated for optimal performance for each application.

* Pacific Blue™ has a maximum emission of 455 nm when it is excited at 405 nm. Prior to using Pacific Blue™ conjugate for flow cytometric analysis, please verify your flow cytometer's capability of exciting and detecting the fluorochrome.

Application Notes: Additional reported applications include: immunofluorescence³.

Application References: 1. Schlossman S, *et al.* Eds. 1995. Leucocyte Typing V. Oxford University Press. New York.
2. Kmiecik M, *et al.* 2009. *J. Transl. Med.* 7:89. (FC) [PubMed](#)
3. Ernst CW, *et al.* 2007. *Clin. Exp. Immunol.* 148:271. (IF) [PubMed](#)

Description: CD25 is a 55 kD type I transmembrane glycoprotein also known as the low affinity IL-2 receptor α chain or Tac. It is expressed on progenitor lymphocytes, activated T and B cells, and activated monocytes/macrophages. CD25 is also expressed on a subset of non-stimulated CD4⁺ T cells termed T regulatory cells. CD25 associates with the IL-2 receptor β (CD122) and common γ chains (CD132) to form the high affinity IL-2R complex.

- Antigen** 1. Taniguchi T, *et al.* 1993. *Cell* 73:5.
- References:** 2. Waldmann T. 1991. *J. Biol. Chem.* 266:2681.