

Alexa Fluor® 488 anti-human CD25

Catalog # / Size: 2113075 / 25 tests
2113080 / 100 tests

Clone: BC96

Isotype: Mouse IgG1, κ

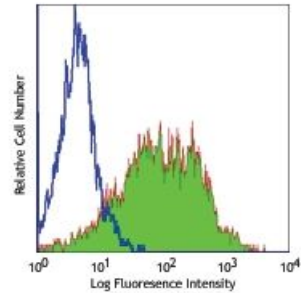
Reactivity: Human

Preparation: The antibody was purified by affinity chromatography, and conjugated with Alexa Fluor® 488 under optimal conditions.

Formulation: Phosphate-buffered solution, pH 7.2, containing 0.09% sodium azide and 0.2% (w/v) BSA (origin USA).

Workshop Number: V T-072

Concentration: Lot-specific



PHA-stimulated (3 day) human peripheral blood lymphocytes were stained with CD25 (clone BC96) Alexa Fluor® 488 (filled histogram) or mouse IgG1, κ Alexa Fluor® 488 isotype control (open histogram).

Applications:

Applications: Flow Cytometry

Recommended Usage: Each lot of this antibody is quality control tested by immunofluorescent staining with flow cytometric analysis. For flow cytometric staining, the suggested use of this reagent is 5 microL per million cells or 5 microL per 100 microL of whole blood. It is recommended that the reagent be titrated for optimal performance for each application.

* Alexa Fluor® 488 has a maximum emission of 519 nm when it is excited at 488 nm.

Application Notes: Additional reported applications include: immunofluorescence³.

Application References:

- Schlossman S, et al. Eds. 1995. Leucocyte Typing V. Oxford University Press. New York.
- Kmieciak M, et al. 2009. *J. Transl. Med.* 7:89. (FC) [PubMed](#)
- Ernst CW, et al. 2007. *Clin. Exp. Immunol.* 148:271. (IF) [PubMed](#)

Description: CD25 is a 55 kD type I transmembrane glycoprotein also known as the low affinity IL-2 receptor α chain or Tac. It is expressed on progenitor lymphocytes, activated T and B cells, and activated monocytes/macrophages. CD25 is also expressed on a subset of non-stimulated CD4⁺ T cells termed T regulatory cells. CD25 associates with the IL-2 receptor β (CD122) and common γ chains (CD132) to form the high affinity IL-2R complex.

Antigen References:

- Taniguchi T, et al. 1993. *Cell* 73:5.
- Waldmann T. 1991. *J. Biol. Chem.* 266:2681.