

**Brilliant Violet 510™ anti-human CD22**

**Catalog # / Size:** 2112630 / 100 tests  
2112625 / 25 tests

**Clone:** HIB22

**Isotype:** Mouse IgG1, κ

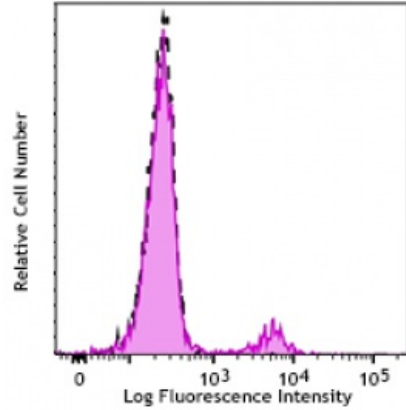
**Reactivity:** Human

**Preparation:** The antibody was purified by affinity chromatography and conjugated with Brilliant Violet 510™ under optimal conditions. The solution is free of unconjugated Brilliant Violet 510™ and unconjugated antibody.

**Formulation:** Phosphate-buffered solution, pH 7.2, containing 0.09% sodium azide and BSA (origin USA).

**Workshop Number:** V CD22.14

**Concentration:** Lot-specific



Human peripheral blood lymphocytes were stained with CD22 (clone HIB22) Brilliant Violet 510™ (filled histogram) or Mouse IgG1, κ Brilliant Violet 510™ isotype control (open histogram).

**Applications:**

**Applications:** Flow Cytometry

**Recommended Usage:** Each lot of this antibody is quality control tested by immunofluorescent staining with flow cytometric analysis. For flow cytometric staining, the suggested use of this reagent is 5 µl per million cells or 5 µl per 100 µl of whole blood. It is recommended that the reagent be titrated for optimal performance for each application.

Brilliant Violet 510™ excites at 405 nm and emits at 510 nm. The bandpass filter 510/50 nm is recommended for detection, although filter optimization may be required depending on other fluorophores used. Be sure to verify that your cytometer configuration and software setup are appropriate for detecting this channel. Refer to your instrument manual or manufacturer for support. Brilliant Violet 510™ is a trademark of Sirigen Group Ltd.

This product is subject to proprietary rights of Sirigen Inc. and is made and sold under license from Sirigen Inc. The purchase of this product conveys to the buyer a non-transferable right to use the purchased product for research purposes only. This product may not be resold or incorporated in any manner into another product for resale. Any use for therapeutics or diagnostics is strictly prohibited. This product is covered by U.S. Patent(s), pending patent applications and foreign equivalents.

**Application Notes:** Additional reported applications (for the relevant formats) include: immunohistochemical staining of acetone-fixed frozen tissue sections.

**Application References:** 1. Clark E. 1993. *J. Immunol.* 150:4715.  
2. Shan D, et al. 1995. *J. Immunol.* 154:4466.

**Description:** CD22 is a 130 kD type I transmembrane glycoprotein also known as Siglec-2 and BL-CAM. It is a member of the immunoglobulin superfamily (sialoadhesion subgroup). CD22 is expressed in the cytoplasm of pro-B and pre-B cells, and on

the surface of mature B and activated B cells, but not on plasma cells. CD22 is present in the B cell receptor complex and associates with SHP-1, Syk, Lck, Lyn, and phospholipase Cy1. A primary function of CD22 is thought to be in limiting antigen receptor signaling by modulating B cell activation threshold. CD22 has been shown to bind to CD45RO and CD75, although the natural ligands for this molecule remain controversial.

**Antigen**  
**References:**

1. Clark E. 1993. *J. Immunol.* 150:4715.
2. Shan D, *et al.* 1995. *J. Immunol.* 154:4466.