

Brilliant Violet 650™ anti-human CD20

Catalog # / Size: 2111680 / 100 tests
2111675 / 25 tests

Clone: 2H7

Isotype: Mouse IgG2b, κ

Immunogen: Human tonsillar B cells

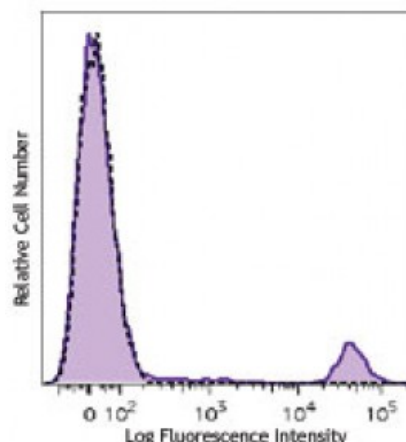
Reactivity: Human

Preparation: The antibody was purified by affinity chromatography and conjugated with Brilliant Violet 650™ under optimal conditions. The solution is free of unconjugated Brilliant Violet 650™ and unconjugated antibody.

Formulation: Phosphate-buffered solution, pH 7.2, containing 0.09% sodium azide and BSA (origin USA).

Workshop Number: IV B201

Concentration: Lot-specific



Human peripheral blood lymphocytes were stained with CD20 (clone 2H7) Brilliant Violet 650™.

Applications:

Applications: Flow Cytometry

Recommended Usage: Each lot of this antibody is quality control tested by immunofluorescent staining with flow cytometric analysis. For flow cytometric staining, the suggested use of this reagent is ≤ 5 microL per million cells or 5 microL per 100 microL of whole blood. It is recommended that the reagent be titrated for optimal performance for each application.

Brilliant Violet 650™ excites at 405 nm and emits at 645 nm. The bandpass filter 660/20 nm is recommended for detection, although filter optimization may be required depending on other fluorophores used. **Be sure to verify that your cytometer configuration and software setup are appropriate for detecting this channel.** Refer to your instrument manual or manufacturer for support. Brilliant Violet 650™ is a trademark of Sirigen Group Ltd.

This product is subject to proprietary rights of Sirigen Inc. and is made and sold under license from Sirigen Inc. The purchase of this product conveys to the buyer a non-transferable right to use the purchased product for research purposes only. This product may not be resold or incorporated in any manner into another product for resale. Any use for therapeutics or diagnostics is strictly prohibited. This product is covered by U.S. Patent(s), pending patent applications and foreign equivalents.

Application Notes: The epitope recognized by clone 2H7 has been mapped to the sequence YNCEPANPSEKNSPST which lies in the large extracellular loop of human CD20. Additional reported applications (for the relevant formats) include: immunoprecipitation⁴ and immunohistochemical staining of acetone-fixed frozen sections⁵.

Application References: 1. Schlossman S, *et al.* 1995. Leucocyte Typing V. Oxford University Press. New York.
2. Knapp W, *et al.* 1989. Leucocyte Typing IV. Oxford University Press. New York.

3. McMichael A, *et al.* Eds. 1987. Leucocyte Typing III Oxford University Press. New York.
 4. Polyak MJ, *et al.* 2002. *Blood* 99:3256. (IP)
 5. Mack CL, *et al.* 2004. *Pediatr. Res.* 56:79. (IHC)
-

Description: CD20 is a 33-37 kD, four transmembrane spanning protein, also known as B1 and Bp35. CD20 is expressed on pre-B-cells, resting and activated B cells (not plasma cells), some follicular dendritic cells, and at low levels on a T cell subset. CD20 is heavily phosphorylated on activated B cells and malignant B cells. Homooligomeric complexes of CD20 are thought to form Ca^{2+} conductive ion channels in the plasma membrane of B cells. The CD20 molecule is involved in B-cell activation and is associated with various Src family kinases (Lyn, Lck, Fyn). It exists in a complex with MHC class I and II, CD53, CD81, and CD82.

Antigen 1. Hultin L, *et al.* 1993. *Cytometry* 14:196.
References: 2. Tedder T, *et al.* 1994. *Immunol. Today* 15:450.