

PE anti-human CD20

Catalog # / Size: 2111525 / 25 tests
2111530 / 100 tests

2111730 / 100 µg

Clone: 2H7

Isotype: Mouse IgG2b, κ

Immunogen: Human tonsillar B cells

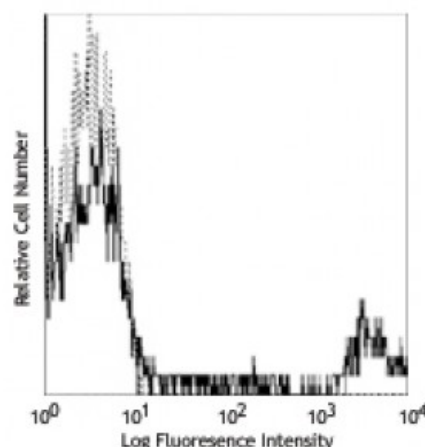
Reactivity: Human

Preparation: The antibody was purified by affinity chromatography, and conjugated with PE under optimal conditions. The solution is free of unconjugated PE and unconjugated antibody.

Formulation: microg size: Phosphate-buffered solution, pH 7.2, containing 0.09% sodium azide.
test sizes: Phosphate-buffered solution, pH 7.2, containing 0.09% sodium azide and 0.2% (w/v) BSA (origin USA).

Workshop Number: IV B201

Concentration: microg sizes: 0.2 mg/ml
test sizes: lot-specific



Human peripheral blood lymphocytes were stained with anti-CD20 (clone 2H7) PE (solid line), or mouse IgG2b, κ PE (dashed line).

Applications:

Applications: Flow Cytometry

Recommended Usage: Each lot of this antibody is quality control tested by immunofluorescent staining with flow cytometric analysis. For flow cytometric staining using the microg size, the suggested use of this reagent is ≤0.125 microg per million cells in 100 microL volume. **Test size products are transitioning from 20 microL to 5 microL per test.** Please check your vial or your CoA to find the suggested use of this reagent per million cells in 100 microL staining volume or per 100 microL of whole blood. It is recommended that the reagent be titrated for optimal performance for each application.

Application Notes: The epitope recognized by clone 2H7 has been mapped to the sequence YNCEPANPSEKNSPST which lies in the large extracellular loop of human CD20. Additional reported applications (for the relevant formats) include: immunoprecipitation⁴ and immunohistochemical staining of acetone-fixed frozen sections⁵.

Application References:

1. Schlossman S, *et al.* 1995. Leucocyte Typing V. Oxford University Press. New York.
2. Knapp W, *et al.* 1989. Leucocyte Typing IV. Oxford University Press. New York.
3. McMichael A, *et al.* Eds. 1987. Leucocyte Typing III Oxford University Press. New York.
4. Polyak MJ, *et al.* 2002. *Blood* 99:3256. (IP)
5. Mack CL, *et al.* 2004. *Pediatr. Res.* 56:79. (IHC)
6. Kusner LL, *et al.* 2014. *PLoS One.* 9:102231. [PubMed](#)

Description: CD20 is a 33-37 kD, four transmembrane spanning protein, also known as B1 and Bp35. CD20 is expressed on pre-B-cells, resting and activated B cells (not plasma cells), some follicular dendritic cells, and at low levels on a T cell subset. CD20 is heavily phosphorylated on activated B cells and malignant B cells. Homooligomeric complexes of CD20 are thought to form Ca^{2+} conductive ion channels in the plasma membrane of B cells. The CD20 molecule is involved in B-cell activation and is associated with various Src family kinases (Lyn, Lck, Fyn). It exists in a complex with MHC class I and II, CD53, CD81, and CD82.

Antigen 1. Hultin L, *et al.* 1993. *Cytometry* 14:196.
References: 2. Tedder T, *et al.* 1994. *Immunol. Today* 15:450.