

PE/Dazzle™ 594 anti-human CD18

Catalog # / Size: 2110640 / 100 tests
2110635 / 25 tests

Clone: TS1/18

Isotype: Mouse IgG1, κ

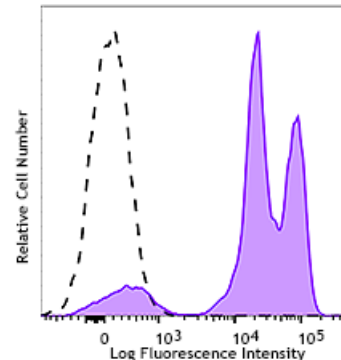
Reactivity: Human, Other

Preparation: The antibody was purified by affinity chromatography and conjugated with PE/Dazzle™ 594 under optimal conditions. The solution is free of unconjugated PE/Dazzle™ 594 and unconjugated antibody.

Formulation: Phosphate-buffered solution, pH 7.2, containing 0.09% sodium azide and 0.2% (w/v) BSA (origin USA).

Workshop Number: V AS162

Concentration: Lot-specific



Human peripheral blood lymphocytes were stained with CD18 (clone TS1/18) PE/Dazzle™ 594 (filled histogram) or Mouse IgG1, κ PE/Dazzle™ 594 isotype control (open histogram).

Applications:

Applications: Flow Cytometry

Recommended Usage: Each lot of this antibody is quality control tested by immunofluorescent staining with flow cytometric analysis. For flow cytometric staining, the suggested use of this reagent is 5 µl per million cells or 5 µl per 100 µl of whole blood. It is recommended that the reagent be titrated for optimal performance for each application.

* PE/Dazzle™ 594 has a maximum excitation of 566 nm and a maximum emission of 610 nm.

Application Notes: Additional reported applications (for the relevant formats) include: inhibition of cell adhesion and migration^{3,4}.

Application References: 1. Anderson D, *et al.* 1987. *Annu. Rev. Med.* 38:175.
2. Springer T. 1994. *Cell* 76:301.

Description: CD18 is a 90-95 kD type I transmembrane protein also known as integrin β₂ subunit, LFA-1 β subunit, and β₂ integrin. CD18 non-covalently associates with CD11a, CD11b or CD11c. CD18 is expressed on all leukocytes. CD18 and associated α chains function in adhesion and signaling in hematopoietic cells.

Antigen References: 1. Anderson D, *et al.* 1987. *Annu. Rev. Med.* 38:175.
2. Springer T. 1994. *Cell* 76:301.