

APC/Fire™ 750 anti-human CD18

Catalog # / Size: 2110625 / 25 tests
2110630 / 100 tests

Clone: TS1/18

Isotype: Mouse IgG1, κ

Immunogen: human PBL

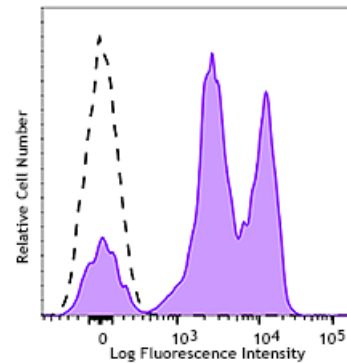
Reactivity: Human, Other

Preparation: The antibody was purified by affinity chromatography and conjugated with APC/Fire™ 750 under optimal conditions.

Formulation: Phosphate-buffered solution, pH 7.2, containing 0.09% sodium azide and 0.2% (w/v) BSA (origin USA).

Workshop Number: V AS162

Concentration: Lot-specific



Human peripheral blood lymphocytes were stained with CD18 (clone TS1/18) APC/Fire™ 750 (filled histogram) or mouse IgG1, κ APC/Fire™ 750 isotype control (open histogram).

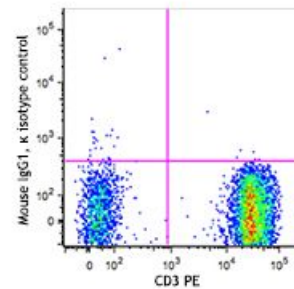
Applications:

Applications: Flow Cytometry

Recommended Usage: Each lot of this antibody is quality control tested by immunofluorescent staining with flow cytometric analysis. For flow cytometric staining, the suggested use of this reagent is 5 µl per million cells in 100 µl staining volume or 5 µl per 100 µl of whole blood. It is recommended that the reagent be titrated for optimal performance for each application.

* APC/Fire™ 750 has a maximum excitation of 650 nm and a maximum emission of 787 nm.

Application Notes: Additional reported applications (for the relevant formats) include: inhibition of cell adhesion and migration^{3,4}. The Ultra-LEAF™ purified antibody (Endotoxin < 0.01 EU/µg, Azide-Free, 0.2 µm filtered) (Cat. No. 302116) is recommended for functional assays.



**Application
References:**

1. Schlossman S, et al. 1995. Leucocyte Typing V. Oxford University Press. New York.
 2. Kishimoto T, et al. 1997. Leucocyte Typing VI. Garland Press. London.
 3. Van Epps DE, et al. 1989. *J. Immunol.* 143:3207. (Block)
 4. Meerschaert J, et al. 1994. *J. Immunol.* 152:1915. (Block)
 5. Sithu SD, et al. 2007. *J. Biol. Chem.* doi:10.1074/jbc.M611273200.
 6. Sommaggio R, et al. 2012. *J. Immunol.* 188:2075. [PubMed](#)
 7. Valenzuela NM, et al. 2013. *J. Immunol.* 190:6635. [PubMed](#)
-

Description: CD18 is a 90-95 kD type I transmembrane protein also known as integrin β_2 subunit, LFA-1 β subunit, and β_2 integrin. CD18 non-covalently associates with CD11a, CD11b or CD11c. CD18 is expressed on all leukocytes. CD18 and associated α chains function in adhesion and signaling in hematopoietic cells.

**Antigen
References:**

1. Anderson D, et al. 1987. *Annu. Rev. Med.* 38:175.
2. Springer T. 1994. *Cell* 76:301.