

PerCP/Cy5.5 anti-human CD14

Catalog # / Size: 2109115 / 25 tests
2109120 / 100 tests

Clone: M5E2

Isotype: Mouse IgG2a, κ

Immunogen: Full-length human CD14 protein

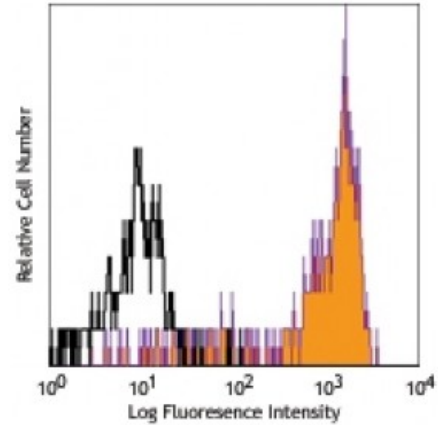
Reactivity: Human

Preparation: The antibody was purified by affinity chromatography, and conjugated with PerCP/Cy5.5 under optimal conditions. The solution is free of unconjugated PerCP/Cy5.5 and unconjugated antibody.

Formulation: Phosphate-buffered solution, pH 7.2, containing 0.09% sodium azide and 0.2% (w/v) BSA (origin USA).

Workshop Number: III 329

Concentration: Lot-specific



Human peripheral blood monocytes stained with M5E2 PerCP/Cy5.5

Applications:

Applications: Flow Cytometry

Recommended Usage: Each lot of this antibody is quality control tested by immunofluorescent staining with flow cytometric analysis. For flow cytometric staining, the suggested use of this reagent is 5 microL per million cells or 5 microL per 100 microL of whole blood. It is recommended that the reagent be titrated for optimal performance for each application.

* PerCP/Cy5.5 has a maximum absorption of 482 nm and a maximum emission of 690 nm.

Application Notes: The M5E2 antibody inhibits monocyte activation and cytokine production induced by LPS. Additional reported applications (for the relevant formats) include: immunohistochemical staining of acetone-fixed frozen sections, blocking of LPS stimulation⁴, and immunofluorescence microscopy⁵. Clone M5E2 is not recommended for immunohistochemical staining of formalin-fixed paraffin-embedded sections. The LEAF™ purified antibody (Endotoxin <0.1 EU/μg, Azide-Free, 0.2 μm filtered) is recommended for functional assays (Cat. No. 301810).

Application References:

1. McMichael A, *et al.* 1987. Leucocyte Typing III. Oxford University Press. New York.
2. Knapp W, *et al.* Eds. 1989. Leucocyte Typing IV. Oxford University Press. New York.
3. Schlossman S, *et al.* Eds. 1995. Leucocyte Typing V. Oxford University Press. New York.
4. Power CP, *et al.* 2004. *J. Immunol.* 173:5229. (Block)
5. Williams KC, *et al.* 2001. *J. Exp. Med.* 193:905. (IF)
6. Iwamoto S, *et al.* 2007. *J. Immunol.* 179:1449. (FC) [PubMed](#)
7. Santer DM, *et al.* 2010. *J. Immunol.* 485:4739. [PubMed](#)
8. Yoshino N, *et al.* 2000. *Exp. Anim. (Tokyo)* 49:97. (FC)
9. Santos JM, *et al.* 2013. *J Transl Med.* 11:18. [PubMed](#)

Description: CD14 is a 53-55 kD glycosylphosphatidylinositol (GPI)-linked membrane glycoprotein also known as LPS receptor. CD14 is expressed at high levels on monocytes and macrophages, and at lower levels on granulocytes. Some dendritic cell populations such as interfollicular dendritic cells, reticular dendritic cells, and Langerhans cells have also been reported to express CD14. As a high-affinity receptor for LPS, CD14 is involved in the clearance of gram-negative pathogens, and in the upregulation of adhesion molecules and expression of cytokines in monocytes and neutrophils.

Antigen
References:

1. Stocks S, *et al.* 1990. *Biochem. J.* 268:275.
2. Wright S, *et al.* 1990. *Science* 249:1434.