

**FITC anti-human CD11b**

**Catalog # / Size:** 2106645 / 25 tests  
2106650 / 100 tests

**Clone:** ICRF44

**Isotype:** Mouse IgG1,  $\kappa$

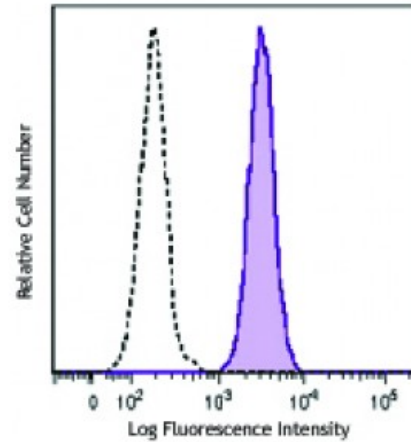
**Reactivity:** Human

**Preparation:** The antibody was purified by affinity chromatography and conjugated with FITC under optimal conditions. The solution is free of unconjugated FITC and unconjugated antibody.

**Formulation:** Phosphate-buffered solution, pH 7.2, containing 0.09% sodium azide and 0.2% (w/v) BSA (origin USA).

**Workshop Number:** IV M047

**Concentration:** Lot-specific



Human peripheral blood granulocytes were stained with CD11b (clone ICRF44) FITC (filled histogram) or mouse IgG1,  $\kappa$  FITC (open histogram).

**Applications:**

**Applications:** Flow Cytometry

**Recommended Usage:** Each lot of this antibody is quality control tested by immunofluorescent staining with flow cytometric analysis. For flow cytometric staining, the suggested use of this reagent is 5 microL per million cells or 5 microL per 100 microL of whole blood. It is recommended that the reagent be titrated for optimal performance for each application.

**Application Notes:** The ICRF44 antibody inhibits heterotypic adhesion of granulocytes in response to fMLP. Additional reported applications (for the relevant formats) include: immunohistochemical staining of acetone-fixed frozen tissue sections, immunofluorescence microscopy<sup>5</sup>, stimulation of monocytes<sup>3</sup>, blocking of heterotypic PMN aggregation<sup>8</sup>, and blocking of granulocyte activation<sup>12</sup>. This clone was tested in-house and does not work on formalin fixed paraffin-embedded (FFPE) tissue.

The LEAF™ purified antibody (Endotoxin <0.1 EU/ $\mu$ g, Azide-Free, 0.2  $\mu$ m filtered) is recommended for functional assays (Cat. No. 301312).

- Application References:**
1. Knapp W. 1989. Leucocyte Typing IV. Oxford University Press New York.
  2. Barclay N, *et al.* 1997. The Leucocyte Antigen Facts Book. Academic Press Inc. San Diego.
  3. Rezzonico R, *et al.* 2001. *Blood* 97:2932. (Stim)
  4. Marsik C, *et al.* 2003. *Shock* 20:493. (FC)
  5. David A, *et al.* 2003. *J. Leukoc. Biol.* 74:551. (IF)
  6. Charles N, *et al.* 2010. *Nat. Med.* 16:701. (FC) [PubMed](#)
  7. Thurlow LR, *et al.* 2010. *Infect. Immun.* 128:1128. (FC) [PubMed](#)
  8. Jadhav S, *et al.* 2001. *J. Immunol.* 167:5986. (Block)
  9. Yoshino N, *et al.* 2000. *Exp. Anim. (Tokyo)* 49:97. (FC)
  10. Sestak K, *et al.* 2007. *Vet. Immunol. Immunopathol.* 119:21. (FC)
  11. Wen T, *et al.* 2014. *J Immunol.* 192:5481. (FC) [PubMed](#)
  12. Sprong T, *et al.* 2003. *Blood* 102:3702. (Block)
  13. Cash JL, *et al.* 2013. *EMBO Rep.* 14:999. (FC) [PubMed](#)
  14. Larsson K, *et al.* 2015. *PNAS.* [PubMed](#)

---

**Description:** CD11b is a 165-170 kD type I transmembrane glycoprotein also known as  $\alpha_M$  integrin, Mac-1, CR3, and C3biR. CD11b non-covalently associates with integrin  $\beta_2$  (CD18) and is expressed on granulocytes, monocytes/macrophages, dendritic cells, NK cells, and subsets of T and B cells. CD11b/CD18 is critical for the transendothelial migration of monocytes and neutrophils. It is also involved in granulocyte adhesion, phagocytosis, and neutrophil activation. CD11b/CD18 interacts with ICAM-1 (CD54), ICAM-2 (CD102), ICAM-4, CD14, CD23, heparin, iC3b, fibrinogen, and factor X.

**Antigen**  
**References:** 1. Stewart M, *et al.* 1995. *Curr. Opin. Cell Biol.* 7:690.