

PE/Dazzle™ 594 anti-human CD11a

Catalog # / Size: 2106160 / 100 tests
2106155 / 25 tests

Clone: HI111

Isotype: Mouse IgG1, κ

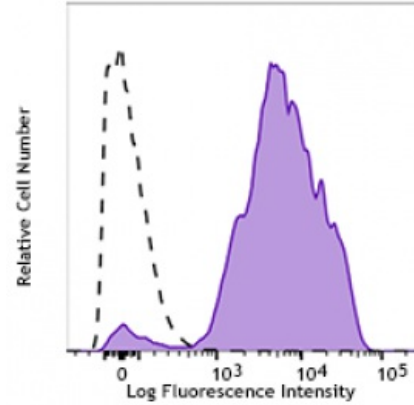
Reactivity: Human, Non-human primate

Preparation: The antibody was purified by affinity chromatography and conjugated with PE/Dazzle™ 594 under optimal conditions. The solution is free of unconjugated PE/Dazzle™ 594 and unconjugated antibody.

Formulation: Phosphate-buffered solution, pH 7.2, containing 0.09% sodium azide and 0.2% (w/v) BSA (origin USA).

Workshop Number: IV N231

Concentration: Lot-specific



Human peripheral blood lymphocytes were stained with HI111 PE/Dazzle™ 594 (filled histogram) or mouse IgG1

Applications:

Applications: Flow Cytometry

Recommended Usage: Each lot of this antibody is quality control tested by immunofluorescent staining with flow cytometric analysis. For flow cytometric staining, the suggested use of this reagent is 5 µl per million cells or 5 µl per 100 µl of whole blood. It is recommended that the reagent be titrated for optimal performance for each application.

* PE/Dazzle™ 594 has a maximum excitation of 566 nm and a maximum emission of 610 nm.

This product is subject to proprietary rights of Sirigen Inc. and is made and sold under license from Sirigen Inc. The purchase of this product conveys to the buyer a non-transferable right to use the purchased product for research purposes only. This product may not be resold or incorporated in any manner into another product for resale. Any use for therapeutics or diagnostics is strictly prohibited. This product is covered by U.S. Patent(s), pending patent applications and foreign equivalents.

Application Notes: Clone HI111 epitope maps to the top region of the I domain that is close to the putative ligand-binding site surrounding the MIDAS (metal ion-dependent adhesion site). HI111 is specific for the closed confirmation of the integrin⁸. Additional reported applications (for the relevant formats) include: immunohistochemical staining of acetone-fixed frozen sections, Western blotting², and blocking of cell-cell interaction and inhibition the binding of ICAM-1⁴. This clone was tested in-house and does not work on formalin fixed paraffin-embedded (FFPE) tissue.

Application References: 1. Lub M, *et al.* 1995. *Immunol. Today* 16:479.
2. Parsons J. 1996. *Curr. Opin. Cell Biol.* 8:146.

Description: CD11a is a 170-180 kD type I transmembrane glycoprotein also known as LFA-1α

chain and integrin α_L subunit. CD11a non-covalently associates with integrin β_2 (CD18) to form LFA-1. It is expressed on all leukocytes, including B and T lymphocytes, monocytes, macrophages, neutrophils, basophils and eosinophils. It is absent on non-hematopoietic tissues and platelets. CD11a plays a central role in leukocyte cell-cell interactions and is important in lymphocyte costimulation. CD11a/CD18 binds to ICAM-1 (CD54), ICAM-2 (CD102), and ICAM-3 (CD50).

- Antigen**
- References:**
1. Lub M, *et al.* 1995. *Immunol. Today* 16:479.
 2. Parsons J. 1996. *Curr. Opin. Cell Biol.* 8:146.