

PE/Dazzle™ 594 anti-human CD11a

Catalog # / Size: 2106155 / 25 tests
2106160 / 100 tests

Clone: HI111

Isotype: Mouse IgG1, κ

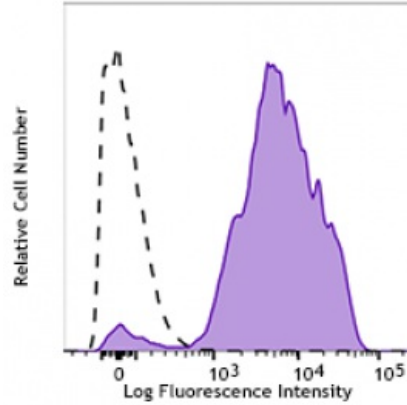
Reactivity: Human, Non-human primate

Preparation: The antibody was purified by affinity chromatography and conjugated with PE/Dazzle™ 594 under optimal conditions. The solution is free of unconjugated PE/Dazzle™ 594 and unconjugated antibody.

Formulation: Phosphate-buffered solution, pH 7.2, containing 0.09% sodium azide and 0.2% (w/v) BSA (origin USA).

Workshop Number: IV N231

Concentration: Lot-specific



Human peripheral blood lymphocytes were stained with HI111 PE/Dazzle™ 594 (filled histogram) or mouse IgG1

Applications:

Applications: Flow Cytometry

Recommended Usage: Each lot of this antibody is quality control tested by immunofluorescent staining with flow cytometric analysis. For flow cytometric staining, the suggested use of this reagent is 5 µl per million cells or 5 µl per 100 µl of whole blood. It is recommended that the reagent be titrated for optimal performance for each application.

* PE/Dazzle™ 594 has a maximum excitation of 566 nm and a maximum emission of 610 nm.

Application Notes: Clone HI111 epitope maps to the top region of the I domain that is close to the putative ligand-binding site surrounding the MIDAS (metal ion-dependent adhesion site). HI111 is specific for the closed confirmation of the integrin⁸. Additional reported applications (for the relevant formats) include: immunohistochemical staining of acetone-fixed frozen sections, Western blotting², and blocking of cell-cell interaction and inhibition the binding of ICAM-1⁴. This clone was tested in-house and does not work on formalin fixed paraffin-embedded (FFPE) tissue.

Application References: 1. Lub M, *et al.* 1995. *Immunol. Today* 16:479.
2. Parsons J. 1996. *Curr. Opin. Cell Biol.* 8:146.

Description: CD11a is a 170-180 kD type I transmembrane glycoprotein also known as LFA-1α chain and integrin α_L subunit. CD11a non-covalently associates with integrin β₂ (CD18) to form LFA-1. It is expressed on all leukocytes, including B and T lymphocytes, monocytes, macrophages, neutrophils, basophils and eosinophils. It is absent on non-hematopoietic tissues and platelets. CD11a plays a central role in leukocyte cell-cell interactions and is important in lymphocyte costimulation. CD11a/CD18 binds to ICAM-1 (CD54), ICAM-2 (CD102), and ICAM-3 (CD50).

Antigen 1. Lub M, *et al.* 1995. *Immunol. Today* 16:479.

References: 2. Parsons J. 1996. *Curr. Opin. Cell Biol.* 8:146.