

PerCP/Cy5.5 anti-human CD3

Catalog # / Size: 2102145 / 25 tests
2102150 / 100 tests

Clone: UCHT1

Isotype: Mouse IgG1, κ

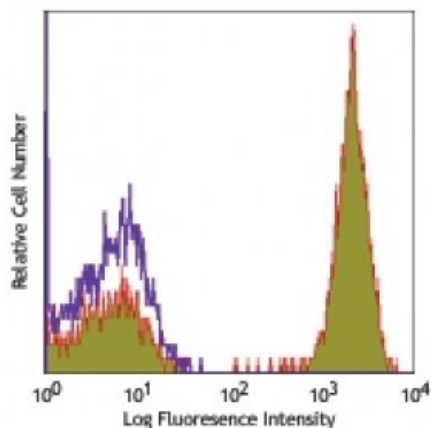
Reactivity: Human

Preparation: The antibody was purified by affinity chromatography, and conjugated with PerCP/Cy5.5 under optimal conditions. The solution is free of unconjugated PerCP/Cy5.5 and unconjugated antibody.

Formulation: Phosphate-buffered solution, pH 7.2, containing 0.09% sodium azide and 0.2% (w/v) BSA (origin USA).

Workshop Number: III 471

Concentration: Lot-specific



Human peripheral blood lymphocytes stained with UCHT1 PerCP/Cy5.5

Applications:

Applications: Flow Cytometry

Recommended Usage: Each lot of this antibody is quality control tested by immunofluorescent staining with flow cytometric analysis. For flow cytometric staining, the suggested use of this reagent is 5 microl per million cells or 5 microl per 100 microl of whole blood. It is recommended that the reagent be titrated for optimal performance for each application.

* PerCP/Cy5.5 has a maximum absorption of 482 nm and a maximum emission of 690 nm.

Application Notes: Additional reported applications (for the relevant formats) include: immunohistochemical staining of acetone-fixed frozen sections^{4,6,7} and formalin-fixed paraffin-embedded sections¹¹, immunoprecipitation¹, activation of T cells^{2,3,5}, and Western blotting⁹. The LEAF™ purified antibody (Endotoxin <0.1 EU/μg, Azide-Free, 0.2 μm filtered) is recommended for functional assays (Cat. No. 300414). For highly sensitive assays, we recommend Ultra-LEAF™ purified antibody (Cat. No. 300438) with a lower endotoxin limit than standard LEAF™ purified antibodies (Endotoxin <0.01 EU/microg).

- Application References:**
1. Salmeron A, *et al.* 1991. *J. Immunol.* 147:3047. (IP)
 2. Graves J, *et al.* 1991. *J. Immunol.* 146:2102. (Activ)
 3. Lafont V, *et al.* 2000. *J. Biol. Chem.* 275:19282. (Activ)
 4. Ryschich E, *et al.* 2003. *Tissue Antigens* 62:48. (IHC)
 5. Thompson AG, *et al.* 2004. *J. Immunol.* 173:1671. (Activ)
 6. Sakkas LI, *et al.* 1998. *Clin. Diagn. Lab. Immun.* 5:430. (IHC)
 7. Mack CL, *et al.* 2004. *Pediatr. Res.* 56:79. (IHC)
 8. Thakral D, *et al.* 2008. *J. Immunol.* 180:7431. (FC) [PubMed](#)
 9. Van Dongen JJM, *et al.* 1988. *Blood* 71:603. (WB)
 10. Yoshino N, *et al.* 2000. *Exp. Anim. (Tokyo)* 49:97. (FC)
 11. Pollard, K. *et al.* 1987. *J. Histochem. Cytochem.* 35:1329. (IHC)
 12. Luckashenak N, *et al.* 2013. *J. Immunol.* 190:27. [PubMed](#).
 13. Armour KL, *et al.* 2014. *PLoS One.* 9:109463. [PubMed](#)

Description: CD3ε is a 20 kD chain of the CD3/T-cell receptor (TCR) complex which is composed of two CD3ε, one CD3γ, one CD3δ, one CD3ζ (CD247), and a T-cell receptor (α/β or γ/δ) heterodimer. It is found on all mature T cells, NKT cells, and some thymocytes. CD3, also known as T3, is a member of the immunoglobulin superfamily that plays a role in antigen recognition, signal transduction, and T cell activation.

Antigen 1. Barclay N, *et al.* 1993. The Leucocyte FactsBook. Academic Press. San Diego.
References: 2. Beverly P, *et al.* 1981. *Eur. J. Immunol.* 11:329.
3. Lanier L, *et al.* 1986. *J. Immunol.* 137:2501-2507.