

Alexa Fluor® 700 anti-human CD2

Catalog # / 2101190 / 100 tests
Size: 2101185 / 25 tests

Clone: RPA-2.10

Isotype: Mouse IgG1, κ

Immunogen: Recombinant mouse CD163 extracellular domain

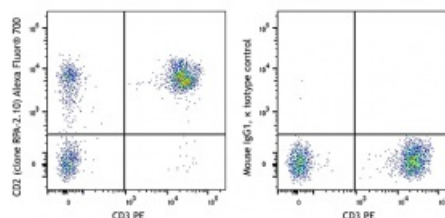
Reactivity: Human, Non-human primate, Other

Preparation: The antibody was purified by affinity chromatography and conjugated with Alexa Fluor® 700 under optimal conditions. The solution is free of unconjugated Alexa Fluor® 700.

Formulation: Phosphate-buffered solution, pH 7.2, containing 0.09% sodium azide and 0.2% (w/v) BSA (origin USA).

Workshop Number: IV T085

Concentration: Lot-specific



Human peripheral blood lymphocytes were stained with CD3 PE and CD2 (clone RPA-2.10) Alexa Fluor® 700 (left), or mouse IgG1, κ Alexa Fluor® 700 isotype control (right).

Applications:

Applications: Flow Cytometry

Recommended Usage: Each lot of this antibody is quality control tested by immunofluorescent staining with flow cytometric analysis. For flow cytometric staining, the suggested use of this reagent is 5 µl per million cells in 100 µl staining volume or 5 µl per 100 µl of whole blood.

* Alexa Fluor® 700 has a maximum emission of 719 nm when it is excited at 633 nm / 635 nm. Prior to using Alexa Fluor® 700 conjugate for flow cytometric analysis, please verify your flow cytometer's capability of exciting and detecting the fluorochrome.

Application Notes: Additional reported applications (for the relevant formats) include: immunohistochemical staining of acetone-fixed frozen tissue sections⁶ and blocking of T cell activation².

- Application References:**
1. Knapp W, et al. Eds. 1989. Leucocyte Typing IV. Oxford University Press. New York.
 2. Aversa G, et al. 1987. *Transplant. Proc.* 19:277. (Block)
 3. Zaretsky AG, et al. 2009. *J. Exp Med.* 206:991. (IHC) [PubMed](#)
 4. Perona-Wright G, et al. 2010. *Nat. Immunol.* 11:520. (FC) [PubMed](#)
 5. Thummler K, et al. 2010. *J. Leukoc. Biol.* 88:1041.
 6. Kap Y, et al. 2009. *J. Histochem. Cytochem.* 57:1159. (IHC)
 7. Yoshino N, et al. 2000. *Exp. Anim. (Tokyo)* 49:97. (FC)

Description: CD2 is a 50 kD type I transmembrane glycoprotein also known as LFA-2, T11, and sheep red blood cell receptor (SRBC-R). This immunoglobulin superfamily member is expressed on thymocytes, T lymphocytes, NK cells, and thymic B cell subsets. The major ligand for CD2 is CD58 (also known as LFA-3). CD2 has also been reported to bind CD48, CD59, and CD15. CD2 plays a critical role in alternative T cell activation, T cell signaling, and cell-cell adhesion.

Antigen
References:

1. Bell G, *et al.* 1995. *J. Immunol.* 155:2805.
2. Bierer B, *et al.* 1989. *Annu. Rev. Immunol.* 7:579.
3. Moingeon P, *et al.* 1989. *Immunol. Rev.* 111:111.